

SINGER
6100/8100/8200

SINGER

SINGER FACTORY

MONZA

pgy

Sewing Machines Series

Supplemental List of Parts

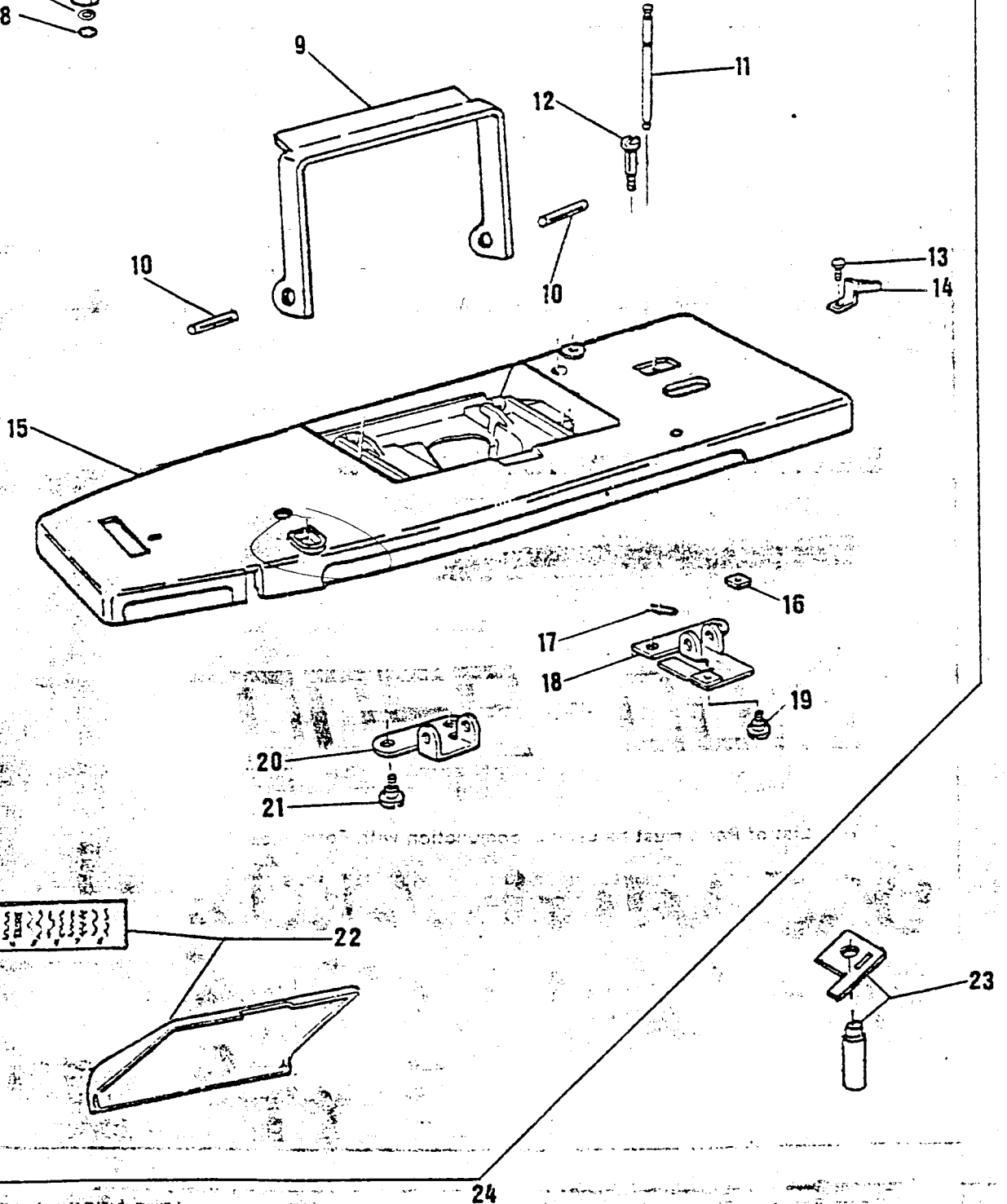
8100 - 8200

• This List of Parts must be used in conjunction with Form 1005

USE WITH 6100 series
P/C - COPY behind
SUPPLEMENT

8100/8200 series

- 2
- 3
- 4
- 5
- 6
- 7
- 8

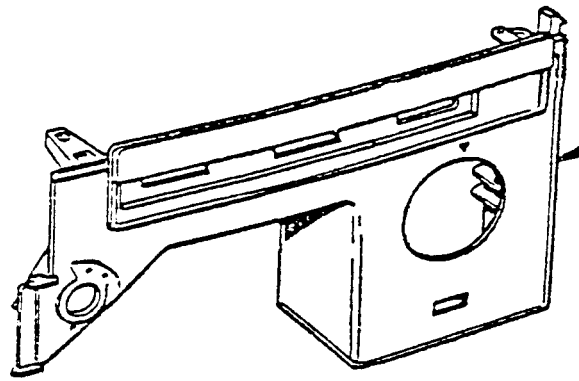
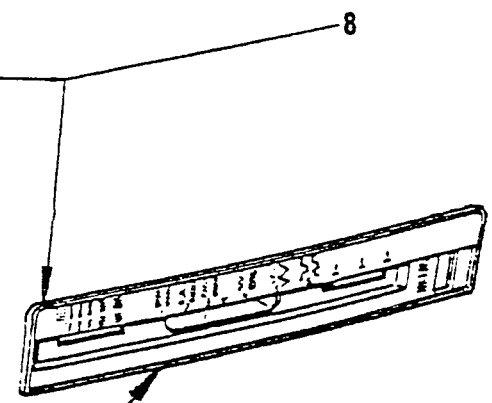
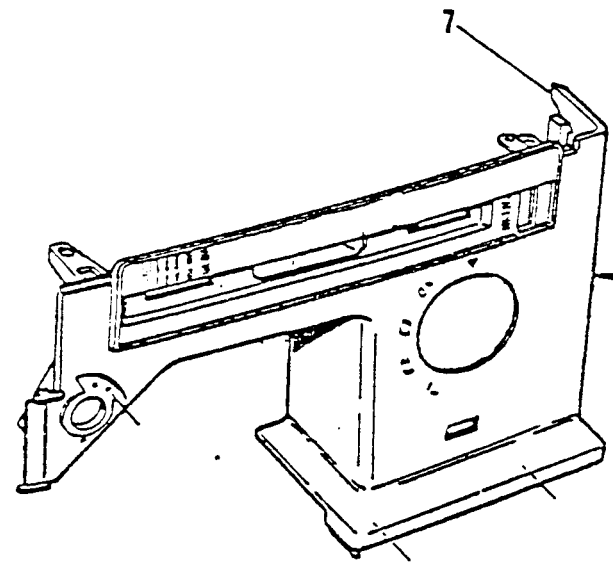
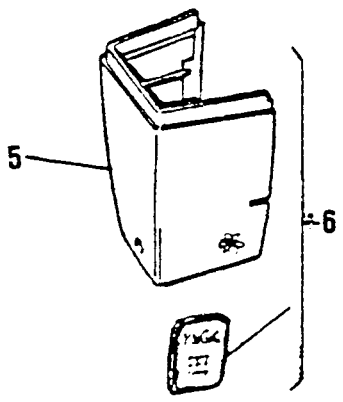
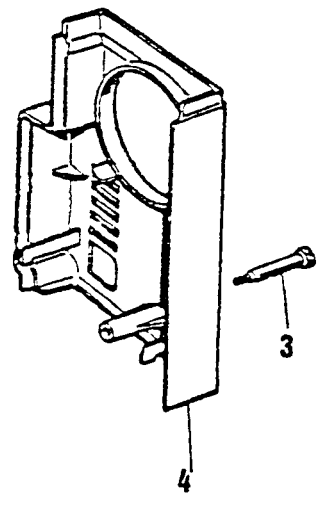
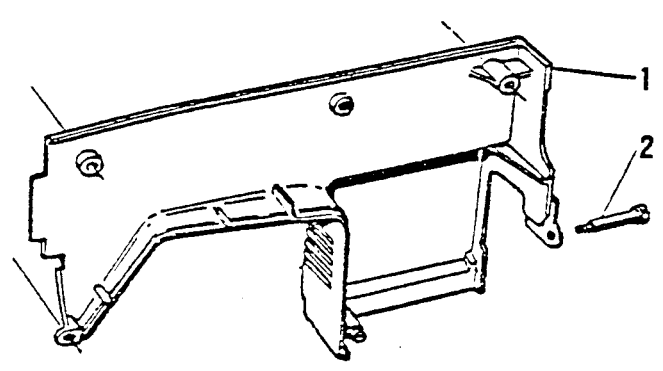


LIST OF PARTS FOR MACHINES 8100/8200 SERIES

REF. N.	PART. N.	8109	8209	8214	8222	8234	8134	PART DESCRIPTION
1	422069-451	X	X	X	X	X	X	Bobbin winder tension cpl.
2	44751	X	X	X	X	X	X	Bobbin winder tension stud
3	45847	X	X	X	X	X	X	Bobbin winder tension disc spring
4	45915	X	X	X	X	X	X	Tension disc.
5	319717	X	X	X	X	X	X	Tension bracket and thread guide
6	44770-459	X	X	X	X	X	X	Tension bracket spacer
7	352732	X	X	X	X	X	X	Tension stud washer
8	44449	X	X	X	X	X	X	Tension stud retaining ring
9	447502	X	X	X	X	X	X	Machine handle
10	447503	X	X	X	X	X	X	Machine handle hinge pin
11	44998-452	X	X	X	X	X	X	Arm top cover spool pin (retractable)
12	141788	X	X	X	X	X	X	Arm top cover screw
13	141808	X	X	X	X	X	X	Bobbin winder stop screw
14	44365	X	X	X	X	X	X	Bobbin winder stop
15	447514-900	X	X	X	X	X	X	Arm top cover
16	53640	X	X	X	X	X	X	Bobbin winder stop screw nut
17	45000	X	X	X	X	X	X	Arm top cover spool pin retaining
18	352929	X	X	X	X	X	X	Machine handle mounting bracket (right)
19	113418-451	X	X	X	X	X	X	Screw
20	352927	X	X	X	X	X	X	Machine handle mounting bracket (left)
21	113418-451	X	X	X	X	X	X	Screw
22	447512-451	X	X					Arm top cover lid assembly
	447510-451			X				Arm top cover lid assembly
	447508-451				X			Arm top cover lid assembly
	447506-451					X	X	Arm top cover lid assembly
23	447522	X	X	X	X	X	X	Needle stop plate assembly
24	447515-451					X	X	Arm top cover assembly
	447515-452				X			Arm top cover assembly
	447515-453			X				Arm top cover assembly
	447515-454	X	X					Arm top cover assembly
Variety of :		6174	6184	6105	6120	7146	7186	
For parts not listed above refer to part of list :		6174	6184	6120	5120	6120	5120	

Handwritten mark: "4" with a checkmark.

8100/8200 series

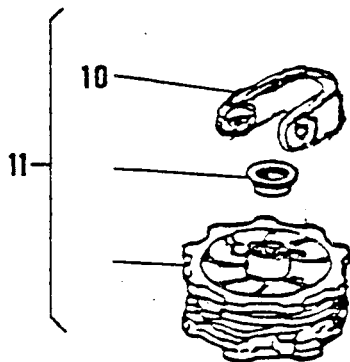
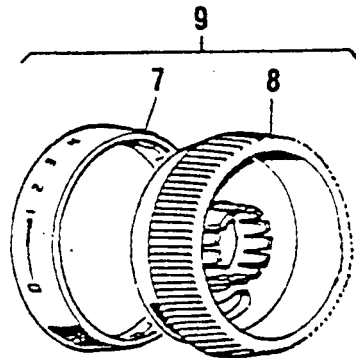
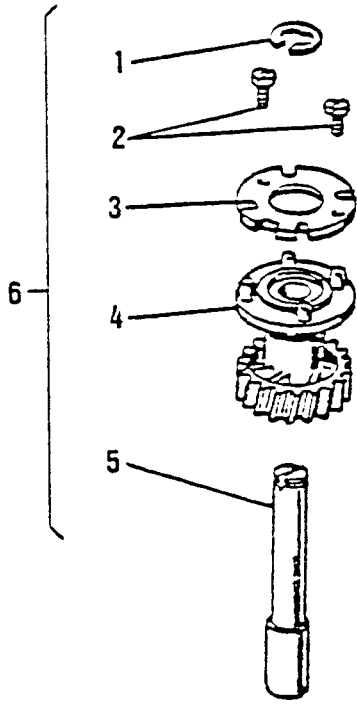


pg 5

LIST OF PARTS FOR MACHINES 8100/8200 SERIES

REF. N.	PART. N.	8109	8209	8214	8222	8234	8134	PART DESCRIPTION
1	421652-451						X	Arm cover (back)
2	354659-451						X	Arm cover screw (back and front)
3	354655-451						X	Arm cover screw (hand wheel side)
4	421654-451						X	Arm cover (hand wheel side)
5	421653-451	X	X	X	X	X	X	Face plate (blank)
6	447530-451	X	X					Face plate assembly
	447529-451			X				Face plate assembly
	447528-451				X			Face plate assembly
	447526-451					X	X	Face plate assembly
7	422438		X	X	X	X		Arm front cover (blank)
8	447523-451		X					Arm front cover cpl.
	447521-451			X				Arm front cover cpl.
	447519-451				X			Arm front cover cpl.
	447517-451					X		Arm front cover cpl.
9	447524-451	X						Arm front cover cpl.
	447518-451						X	Arm front cover cpl.
Variety of :		6174	6184	6105	6120	7146	7186	
For parts not listed above refer to part		74	84	20	20	20	20	

8100/8200 series

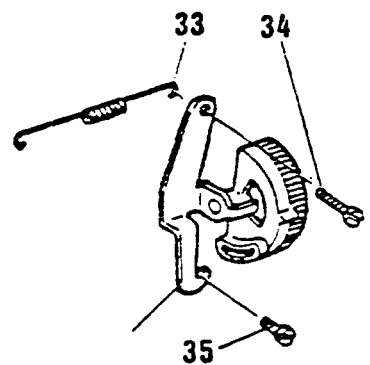
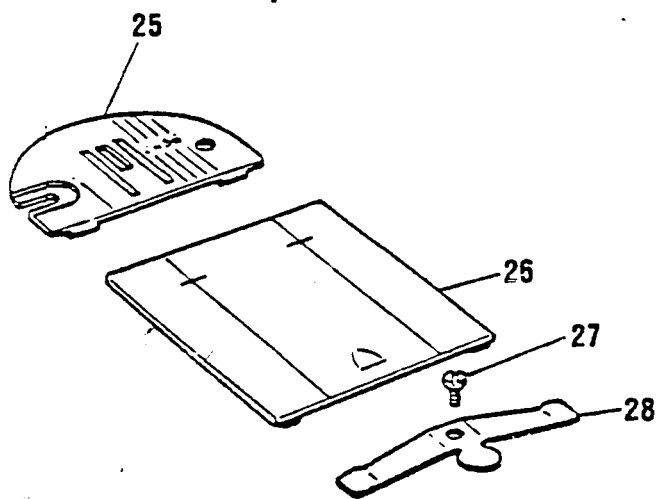
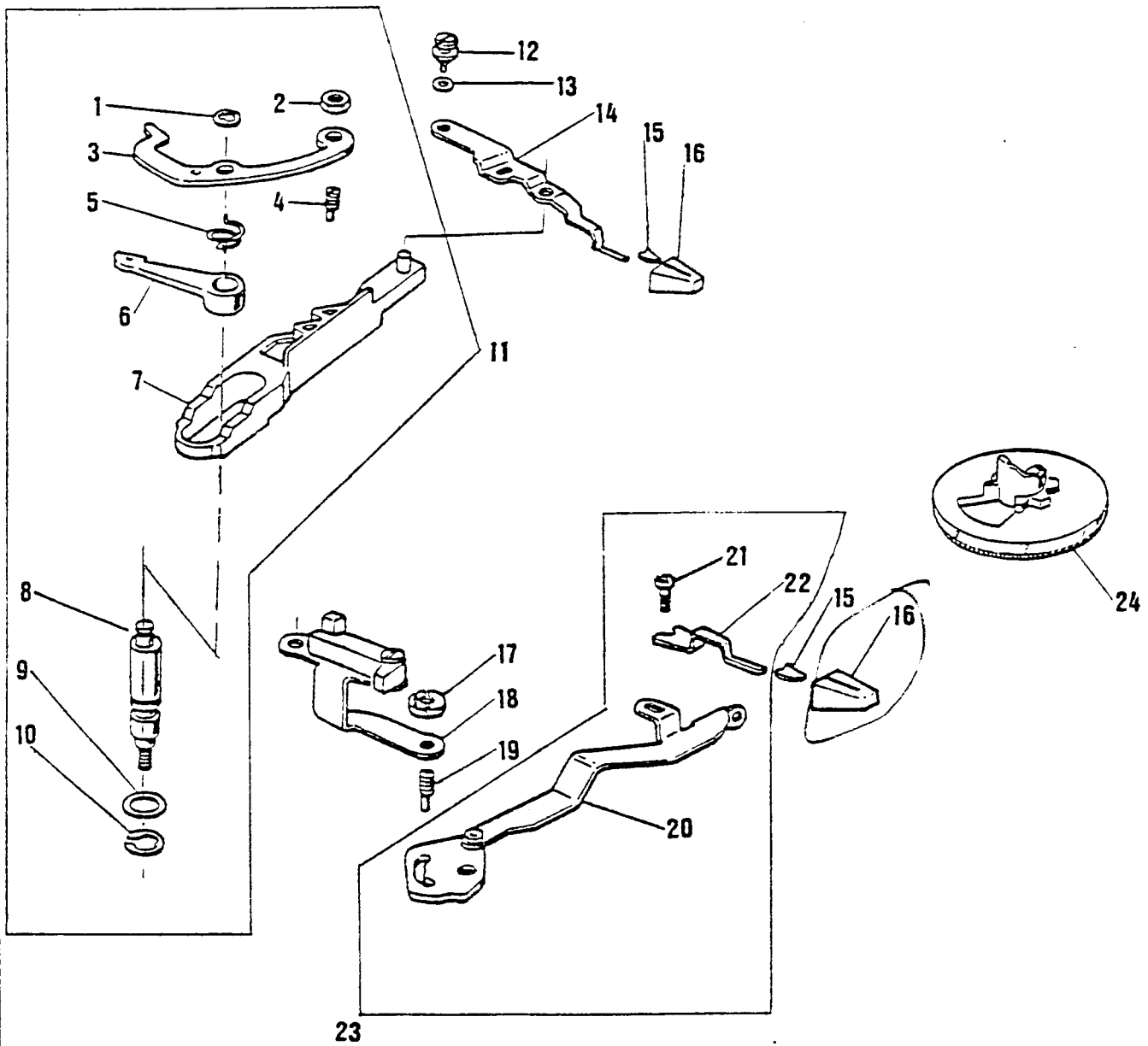


LIST OF PARTS FOR MACHINES 8100/8200 SERIES

REF. N.	PART. N.	8109	8209	8214	8222	8234	8134	PART DESCRIPTION
1	44730	X	X	X	X	X	X	Retaining ring
2	422440	X	X	X	X	X	X	Disc positioning screw (2)
3	422260	X	X	X	X	X	X	Disc mounting plate
4	447546	X	X	X	X	X	X	Disc driving gear
5	447548	X	X	X	X	X	X	Disc driving gear shaft
6	447549	X	X	X	X	X	X	Disc driving gear compl.
7	421938-452			X				Control dial ring (hot stamped)
	421938-456				X			Control dial ring (hot stamped)
	421938-455					X	X	Control dial ring (hot stamped)
8	421862-451			X	X	X	X	Control dial (plastic colour)
9	422021-455			X				Control dial cpl.
	422021-454				X			Control dial cpl.
	422021-453					X	X	Control dial cpl.
10	447531-451	X	X	X	X	X	X	Disc stack retainer in M/C (White)
	447531-452	X	X	X	X	X	X	Disc stack in attachment (Black)
11	447541-000	X	X					Disc stack " 4 " ass'y in M/C
	447537-001			X				Disc stack " 5 " ass'y in M/C
	447537-000				X			Disc stack " 5 " ass'y in M/C
	447533-000					X	X	Disc stack " 8 " ass'y in M/C
Variety of :		6174	6184	6105	6120	7146	7186	
For parts not listed above refer to part of list :		5174	5184	5120	5120	5120	5120	

From the library of: Diamond Needle Corp

8100/8200 series

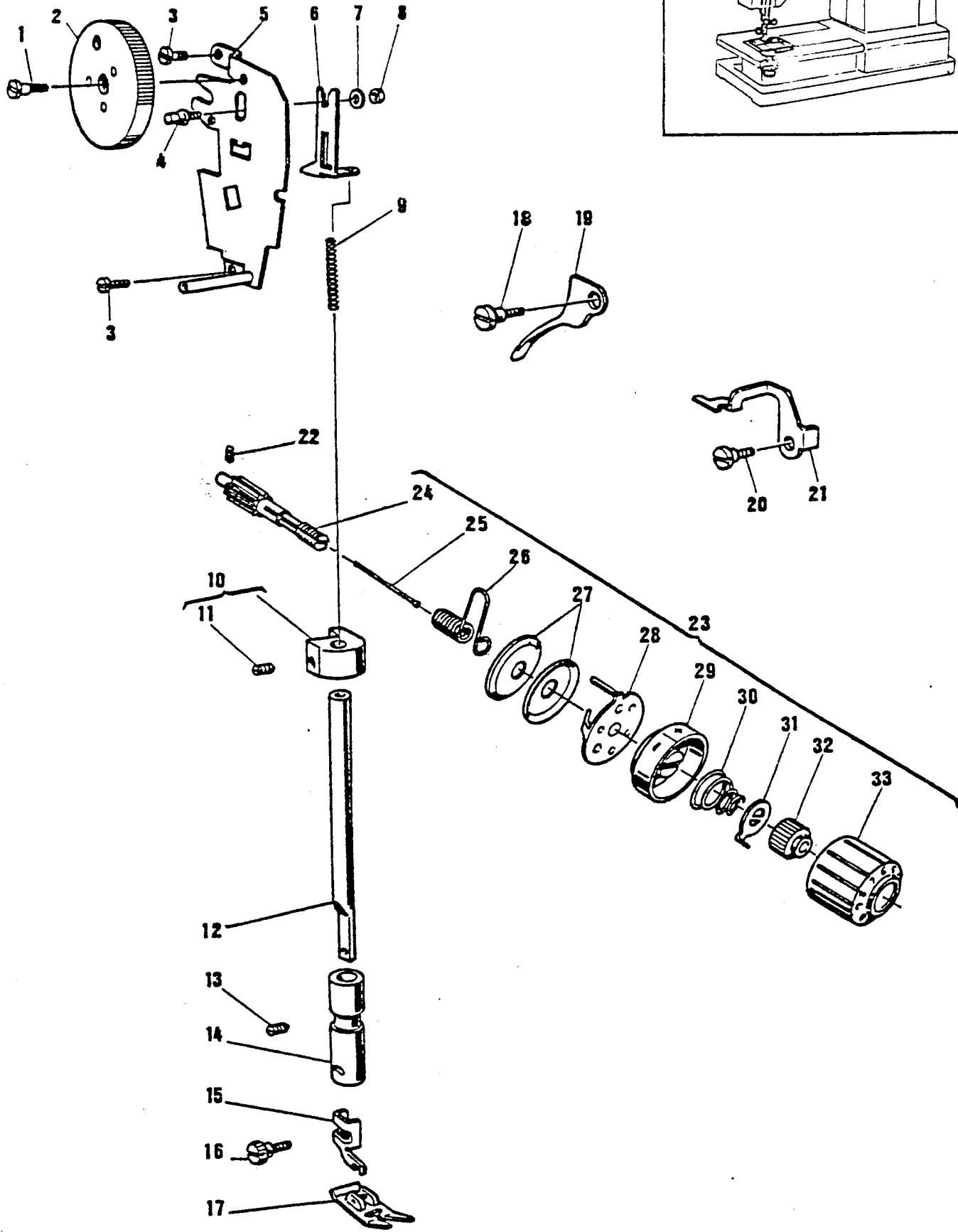
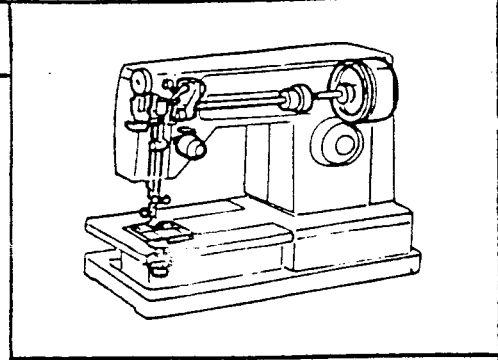


LIST OF PARTS FOR MACHINES 6100 SERIES

REF. N.	PART. N.	6174	6184	6100	6106	6105	6104	6102	PART DESCRIPTION
1	102840	X	X	X	X	X	X	X	Needle plate clamp
2	153930	X	X	X	X	X	X	X	Needle plate clamp spring
3	352461	X							Needle plate -
4	312391		X	X	X	X	X	X	Needle plate
5	44838	X							Bed slide -
6	422229		X	X	X	X	X	X	Bed slide
7	179658	X	X	X	X	X	X	X	Clip
8	354134		X	X	X	X	X	X	Bed slide spring screw (2)
9	354799	X							Bed slide spring screw
10	103344		X	X	X	X	X	X	Bed slide spring
11	37239	X							Bed slide spring
12	422129		X	X	X	X	X	X	Retaining plate
13	319735		X	X	X	X	X	X	Spring
14	319737-451	X	X	X	X	X	X	X	Washer
15	319736	X	X	X	X	X	X	X	Clip
16	353123	X							Retaining plate
17	353122	X							Spring
18	354229-451	X	X	X	X	X	X	X	Position plate screw (2)
19	354227-451	X	X	X	X	X	X	X	Position plate screw
20	381903	X	X	X	X	X	X	X	Retaining plate (Adjustable)
21	44873	X	X	X	X	X	X	X	Position plate
22	172336	X	X	X	X	X	X	X	Bobbin (Plastic)
23	421325	X	X	X	X	X	X	X	Bobbin case cpl. (EUROPE)
	421326	X	X	X	X	X	X	X	Bobbin case cpl. (USA and CANADA)
24	310884-451	X	X	X	X	X	X	X	Tension spring segment (USA and CANADA)
	310884-452	X	X	X	X	X	X	X	Tension spring segment (EUROPE)
25	139975	X	X	X	X	X	X	X	Tension spring segment screw
26	310883	X	X	X	X	X	X	X	Tension spring
27	354183-451	X	X	X	X	X	X	X	Tension regulating screw
28	353104	X	X	X	X	X	X	X	Rotating hook
29	506164		X	X	X	X	X	X	Washer (1)
30	353237		X	X	X	X	X	X	Flanged bushing (eccentric)
31	446942	X							Flanged bushing (eccentric)
32	354133-451		X	X	X	X	X	X	Position screw
33	139943	X							Position screw
34	514689-451		X	X	X	X	X	X	Bushing set screw
35	141925	X							Bushing set screw
36	116084		X	X	X	X	X	X	Rotating hook collar
37	114312		X	X	X	X	X	X	Collar set screw
38	514721		X	X	X	X	X	X	Bevel gear set screw (?)
39	103361-001		X	X	X	X	X	X	Bevel gear cpl.
40	354774-451	X							Belt drive pulley set screw (2)
41	352882	X							Belt drive pulley cpl.

2

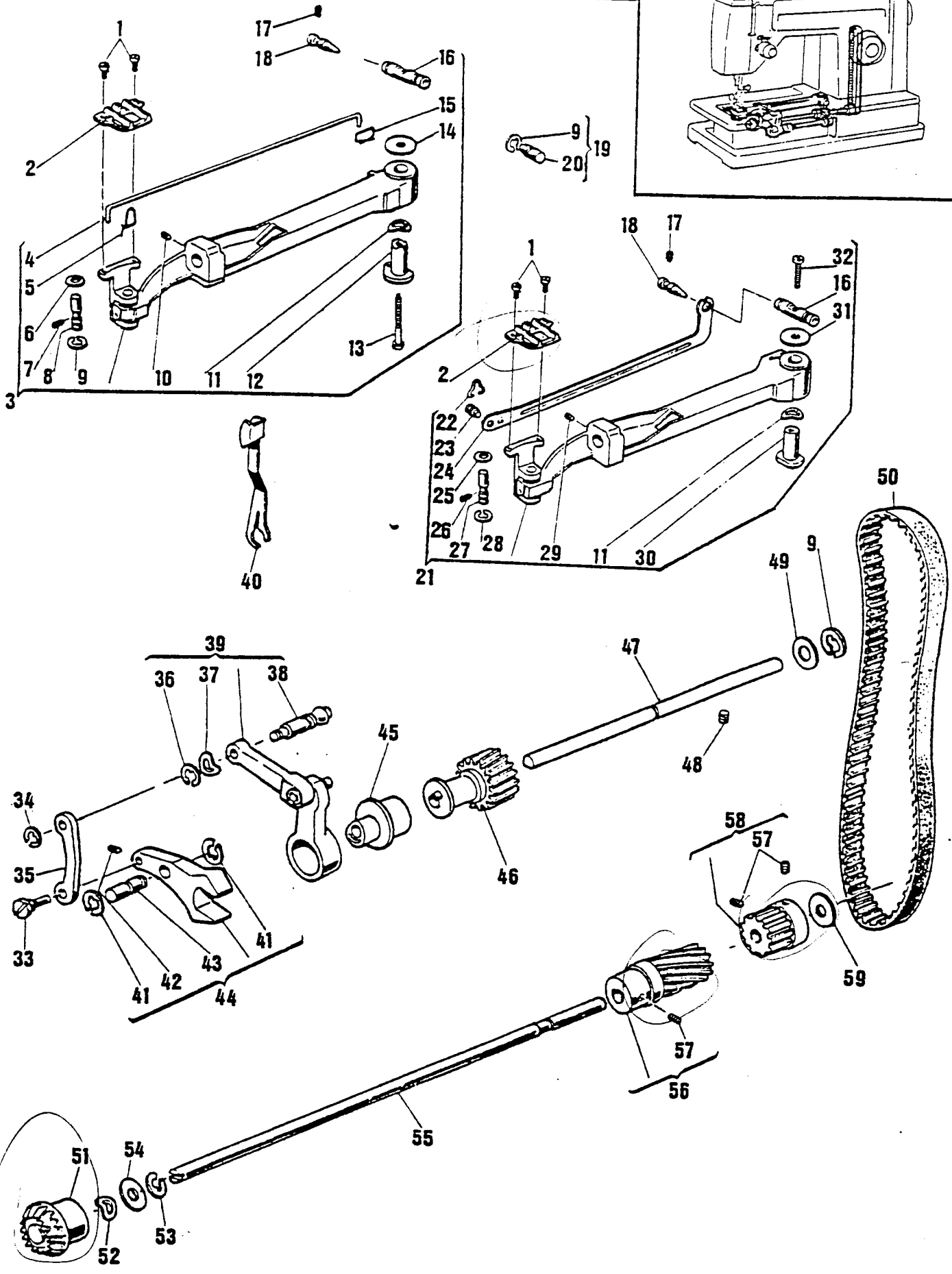
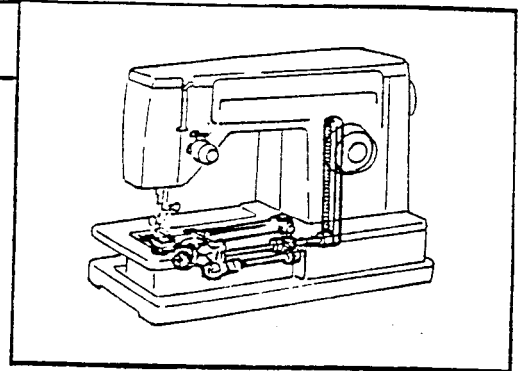
6100 series



From the library of: Diamond Needle Corp

3

6100 series

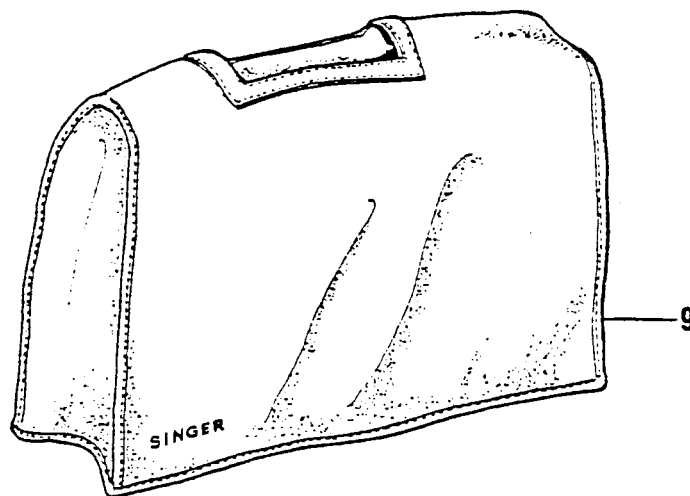
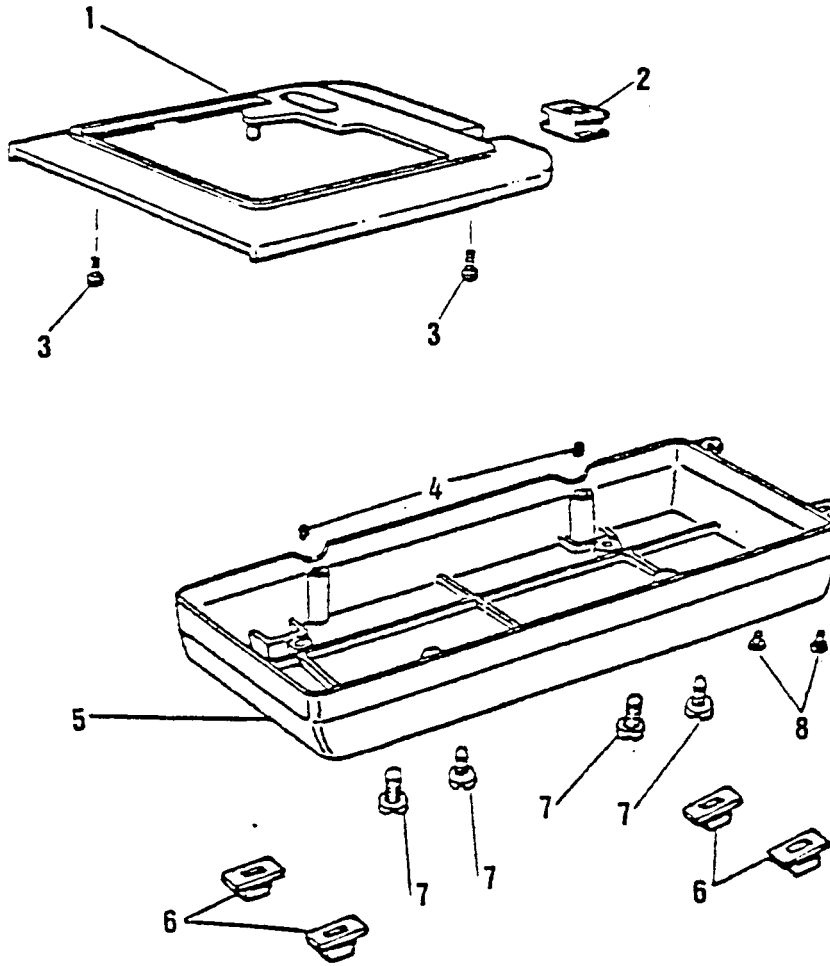


LIST OF PARTS FOR MACHINES 8100/8200 SERIES

REF. N.	PART. N.	8109	8209	8214	8222	8234	8134	PART DESCRIPTION
1	507063			X				Retaining ring
2	53641			X				Nut
3	422081			X				Disc follower disengaging lever
4	44471			X				Screw stud (eccentric)
5	44419			X				Disc follower positioning spring
6	37262			X				Disc follower
7	422425			X				Disc selector cam slide
8	422426			X				Disc follower stud
9	37276			X				Disc follower washer
10	44371			X				Retaining ring
11	422427			X				Pattern selector lever cpl.
12	141786			X				Hinge screw
13	49204			X				Friction washer
14	421859			X				Disc selector lever
15	37244			X				Control lever knob spring clip
16	421883-451			X				Control lever knob (2) cpl.
17	53641			X				Eccentric screw stud nut
18	319798			X				Slide bracket.
19	44471			X				Eccentric screw stud
20	422075			X				Needle position selector lever cpl.
21	141913			X				Screw
22	422428			X				Needle position lever
23	422431			X				Needle position selector lever cpl.
24	422498-452					X		Disc selector dial
25	352461						X	Needle plate
26	44838						X	Bed slide
27	354799						X	Bed slide spring screw
28	37239						X	Bed slide spring
29	353123						X	Retaining plate
30	319737-451						X	Washer
31	353122						X	Spring
32	319736						X	Clip
33	37942			X				Spring
34	139938			X				Screw
35	354084			X				Screw
Variety of :		1/4 6174	1/4 6184	1/0 6105	1/0 6120	1/0 7146	1/0 7186	
For parts not listed		1/4	1/4	1/0	1/0	1/0	1/0	

From the library of: Diamond Needle Corp

8100/8200 series



LIST OF PARTS FOR MACHINES 8100/8200 SERIES

REF. N.	PART. N.	8109	8209	8214	8222	8234	8134	PART DESCRIPTION
1	422472-452						X	Bed cover
2	352584-451						X	Grommet
3	139986						X	Bed cover screw (4)
4	141925						X	Machine hinge connection set screw
5	422479-452						X	Bed cover (bottom)
6	352569						X	Bed leg cushion (4)
7	422483						X	Screw (4)
8	139986						X	Screw (2)
9	422249-452	X	X	X	X	X	X	Soft cover
Variety of :		6174	6184	6105	6120	7146	7186	
For parts not listed		0	0	0	0	0	0	

8100/8200 series

1

9-10-12-13
14-15-16-17
18-19-22a

2

9-10-12-13
15-16-17-18
19-21-22a

3

9-10-11-13
15-16-17-18
19-20-21-22b

4

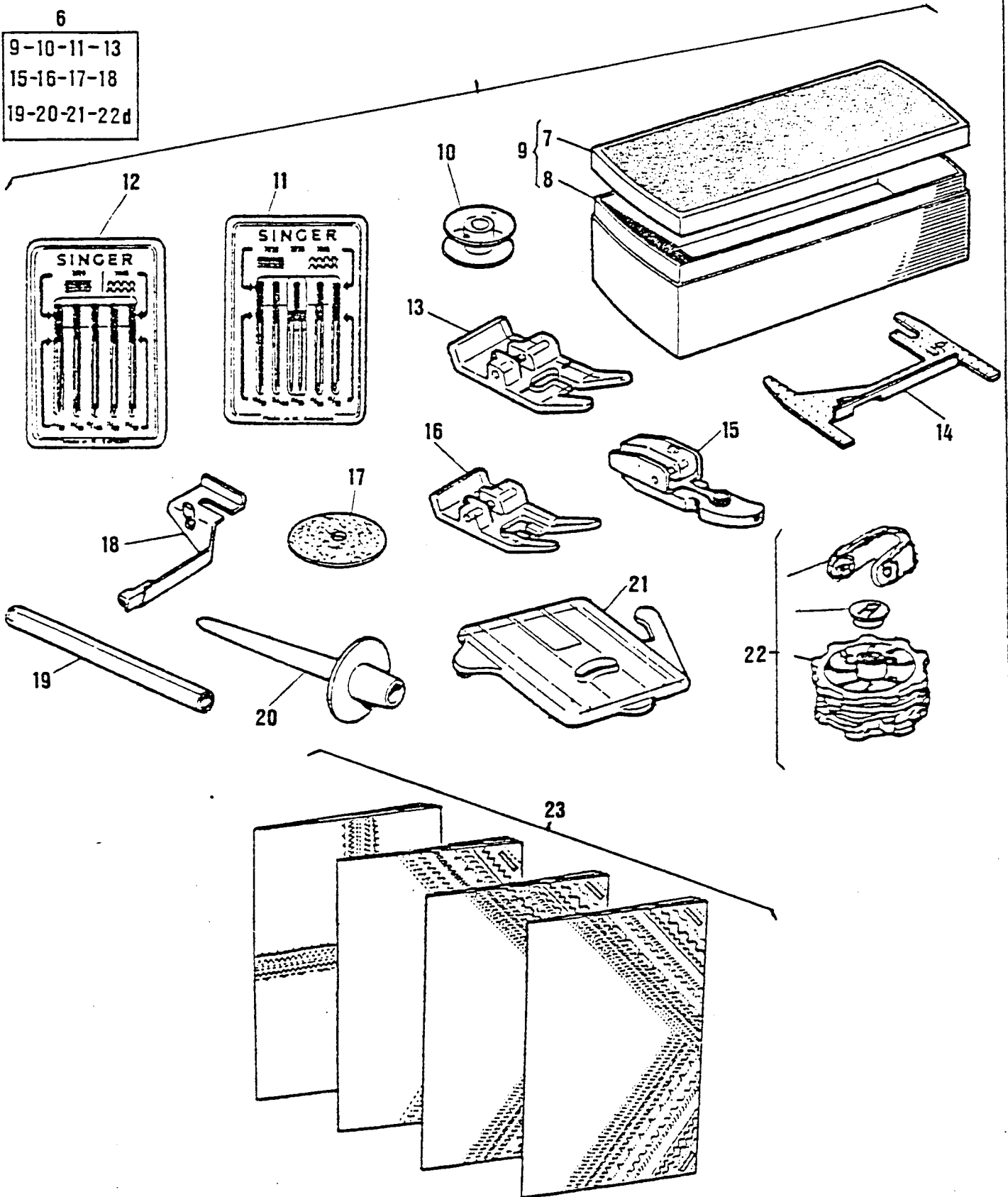
9-10-11-13
15-16-17-18
19-20-21-22c

5

9-10-11-13
14-15-16-17
18-19-20-22c

6

9-10-11-13
15-16-17-18
19-20-21-22d



LIST OF PARTS FOR MACHINES 8100/8200 SERIES

REF. N.	PART. N.	8109	8209	8214	8222	8234	8134	PART DESCRIPTION
1	422026-931	X						Attachment set cpl.
2	422026-932		X					Attachment set cpl.
3	422026-933				X			Attachment set cpl.
4	422026-934					X		Attachment set cpl.
5	422026-935						X	Attachment set cpl.
6	422026-936			X				Attachment set cpl.
7	421743	X	X	X	X	X	X	Attachment box cover
8	421744	X	X	X	X	X	X	Attachment box base
9	421742-451	X	X	X	X	X	X	Attachment box
10	172336	X	X	X	X	X	X	Bobbin transparent plastic (2)
11	381275			X	X	X	X	Needle pack (plastic) containing : cat. 2020 : size 14 and 16 cat. 2025 : size 14 (Twin needle) cat. 2045 : size 11 and 14
12	103489	X	X					Needle pack (plastic) containing : cat. 2020 : size 11-14-16 cat. 2025 : size 11 and 14
13	161927	X	X	X	X	X	X	Snap-on buttonhole foot
14	161894	X					X	Needle plate raising plate (shim)
15	507836	X	X	X	X	X	X	Snap-on zipper foot
16	171498	X	X	X	X	X	X	Snap-on special purpose foot
17	8879-454			X	X	X	X	Spool pin felt (2)
	8879-454	X	X					Spool pin felt (1)
18	381213	X	X	X	X	X	X	Blind stitch guide
19	381800			X	X	X	X	Spool pin adaptor (2)
	381800	X	X					Spool pin adaptor (1)
20	422250			X	X	X	X	Spool pin adaptor (for twin needle sewing)
21	381459		X	X	X	X		Snap-in feed cover plate
22a	447543-000	X	X					Disc stack " A4 " Ass'y
22b	447539-000				X			Disc stack " A5 " Ass'y
22c	447534-000					X	X	Disc stack " A8 " Ass'y
22d	447539-001			X				Disc stack " A5 " Ass'y
23								Instruction books (see table below)
Variety of :		6174	6184	6105	6120	7146	7186	
For parts not listed above refer to part of list :		6174	6184	6120	6120	6120	6120	

From the library of: Diamond Needle Corp

23) INSTRUCTION BOOKS : Languages - Form N.

Model	Italian	English	German	French	Dutch	Danish	Finnish	Swedish	Spanish
8109/8209	2001	2001	2001	2003	2004	2002	2002	2002	2005
8214	2010	2011	2012	2013	2014	2015	2016	2017	
8222	2028	2021	2022	2023	2024	2025	2026	2027	
8134/8234	2031	2031	2031	2033	2034	2032	2032	2032	2035

MARKETING TERRITORIES (Territory Code)

A (105/115V - 220/240V.)

Aden
Algeria
Angola
Bahrain
Bangladesh
Benin (Dahomey)
Burma
Burundi
Cambodia
Camerouns
Cent. Africa Empire
Chad
Congo (Brazzaville)
Egyptian Arab Republic
Ethiopia
Fiji Islands
Gabon
Gambia
Ghana
Guam
Guinea
Guyana
High Volta
Hong Kong
India
Indonesia
Iran
Iraq
Ivory Coast
Jordan
Kenya
Kuwait
Laos
La Reunion
Lebanon
Liberia
Libya
Malagasy Rep.
Malawi
Malaysia
Mali
Mauritania
Mauritius
Morocco
Mozambique
Niger Repub.
Nigeria
North Yemen
Pakistan
Rhodesia
Saudi Arabia
Senegal
Sierra Leone
Singapore
South Korea
South Yemen
Sri Lanka
Sudan
Syria
Taiwan
Tangiers
Tanzania
Thailand

Togo
Tunisia
Uganda
Upper Volta
Vietnam
Zaire (Kinshasa)
Zambia

B (220V)

South Africa

C (220 or 240V)

New Zealand

D (240V)

Great Britain
(England, Scotland,
Wales).
Malta

E (220V)

Netherlands

F (220V)

Austria
Belgium
Denmark
Finland
Greece
Italy
Switzerland
W. Germany

G (120V)

United States

H (120V + 220V)

Argentina
Bahamas
Barbados
Bermuda
Bolivia
Brazil
British Honduras
Canal Zone
Chile
Colombia
Costa Rica
Ecuador
El Salvador
French West Indies
Guatemala
Honduras Republic
Jamaica
Mexico
Neth. Antilles

Nicaragua
Panama
Paraguay
Peru
Philippines
Puerto Rico
Surinam
Trinidad & Tobago
Venezuela
Virgin Islands
West Indies
(Antigua, Dominica,
Grenada, Montserrat,
St. Christopher, Nevis
Anguilla, St. Lucia,
St. Vincent, St. Kitts).

J 127/220V)

Belgium Bi-Volt
W. Germany Bi-Volt

K (240V)

Australia

L (220V)

Norway

M (105V)

Japan

N 127/220V)

France Bi-Volt
Non mandatory
countries Bi-Volt.

O Canada (120V)

P (220V)

Albania
France
Gibraltar
Iceland
Israel
Jugoslavia
Luxembourg
Monaco
Portugal
Spain
Turkey

Q (240V)

Cyprus

R (220V)

Sweden

S (220V)

Eire

SINGER[®]
SINGER FACTORY - MONZA -

List of Parts

Sewing Machines Series

6100

contents

MECHANISM GROUP NO.		PAGE
1	TOP, BACK and SIDES COVERS	4
	FRONT COVER	6, 8, 10
	MACHINE BASE and CLOTH PLATE	12
2	NEEDLE BAR and DRIVE MECHANISM	14
	NEEDLE HOOK and PLATES	16
	PRESSURE BAR and TENSION	18
3	FEED and HOOK DRIVE MECHANISM (Tubular Bed)	20
	FEED and HOOK DRIVE MECHANISM (Flat Bed)	22
4	STITCH LENGTH and REVERSE MECHANISM	24
	BUTTONHOLER, FEED REGULATOR and CAM CONTROL	
	FEED ENGAGING MECHANISM	26
	CAM CONTROL FEED and STITCH BALANCING MECHANISM	28
5	BIGHT AMPLITUDE and NEEDLE POSITION SELECTORS	30
	CAM STACK and PATTERN SELECTOR	32
6	ATTACHMENTS	34
	MACHINE CARRYING CASE and BOTTOM COVER	36
7	ELECTRICS	38

IMPORTANT:

The designations listed below must be applied throughout this manual as follow:

61•6 for 6106-6116-6126-6136-6146-6156 models

61•5 for 6105-6115-6125 models

61•4 for 6104-6114-6124 models

61•2 for 6102-6112-6122-6152 models

61•0 for 6110-6120-6130 models

SINGER

Stabilimento Macchine per Cucire

Viale Sicilia, 75

20052 MONZA (Italy)

Phone: (039) 839001-9

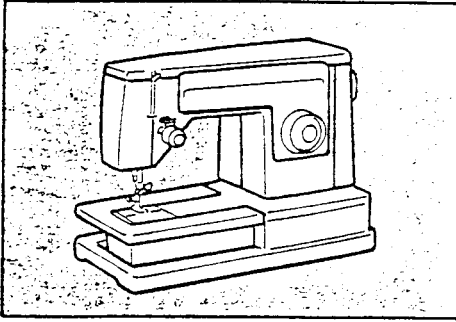
Telex: Pyecom 333301

Printed in Italy

contents

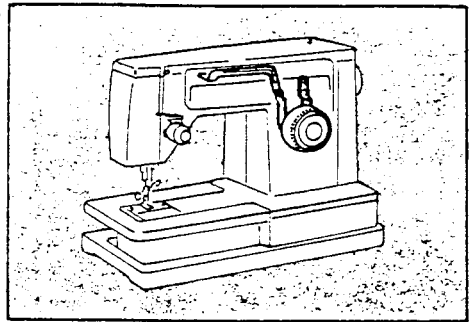
Group

1

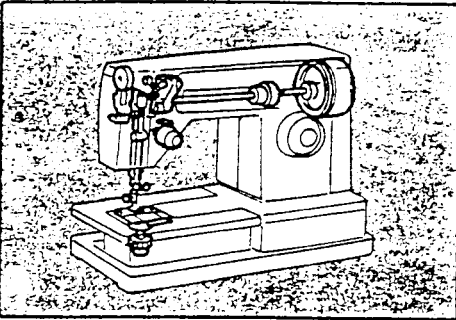


Group

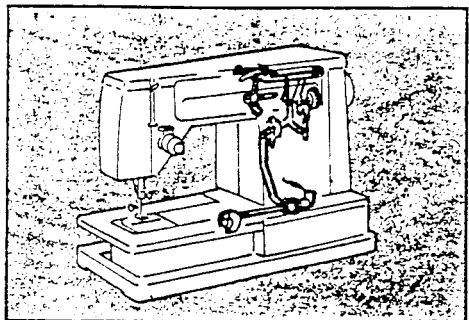
4



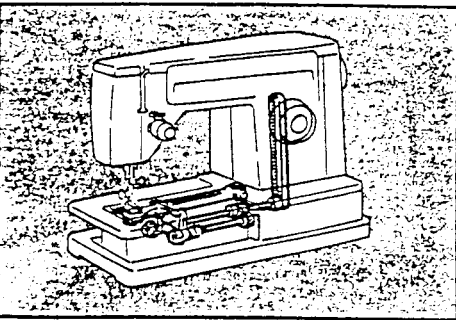
2



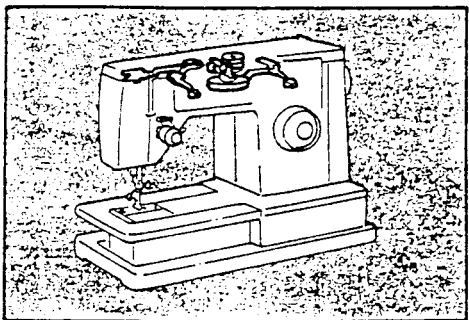
4



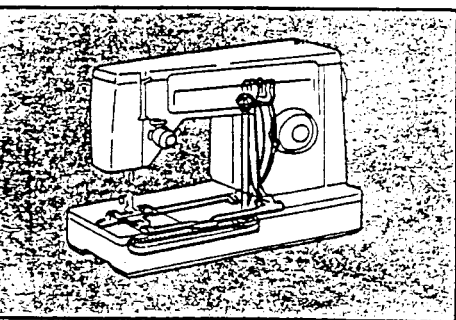
3



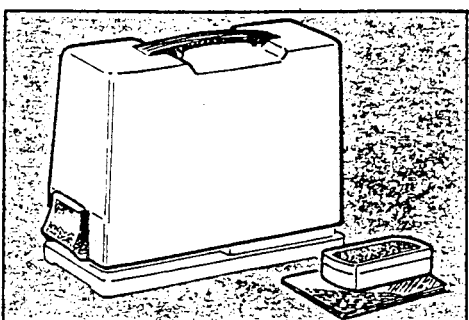
5



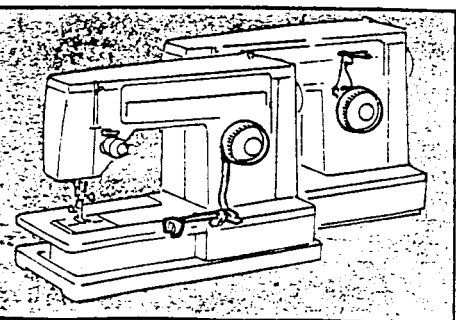
3



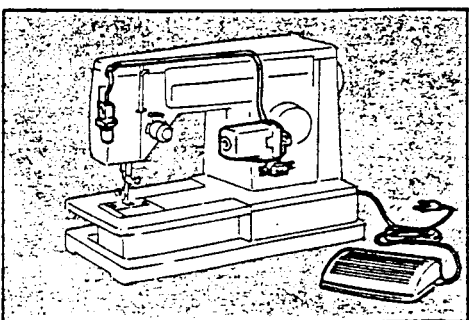
6



4

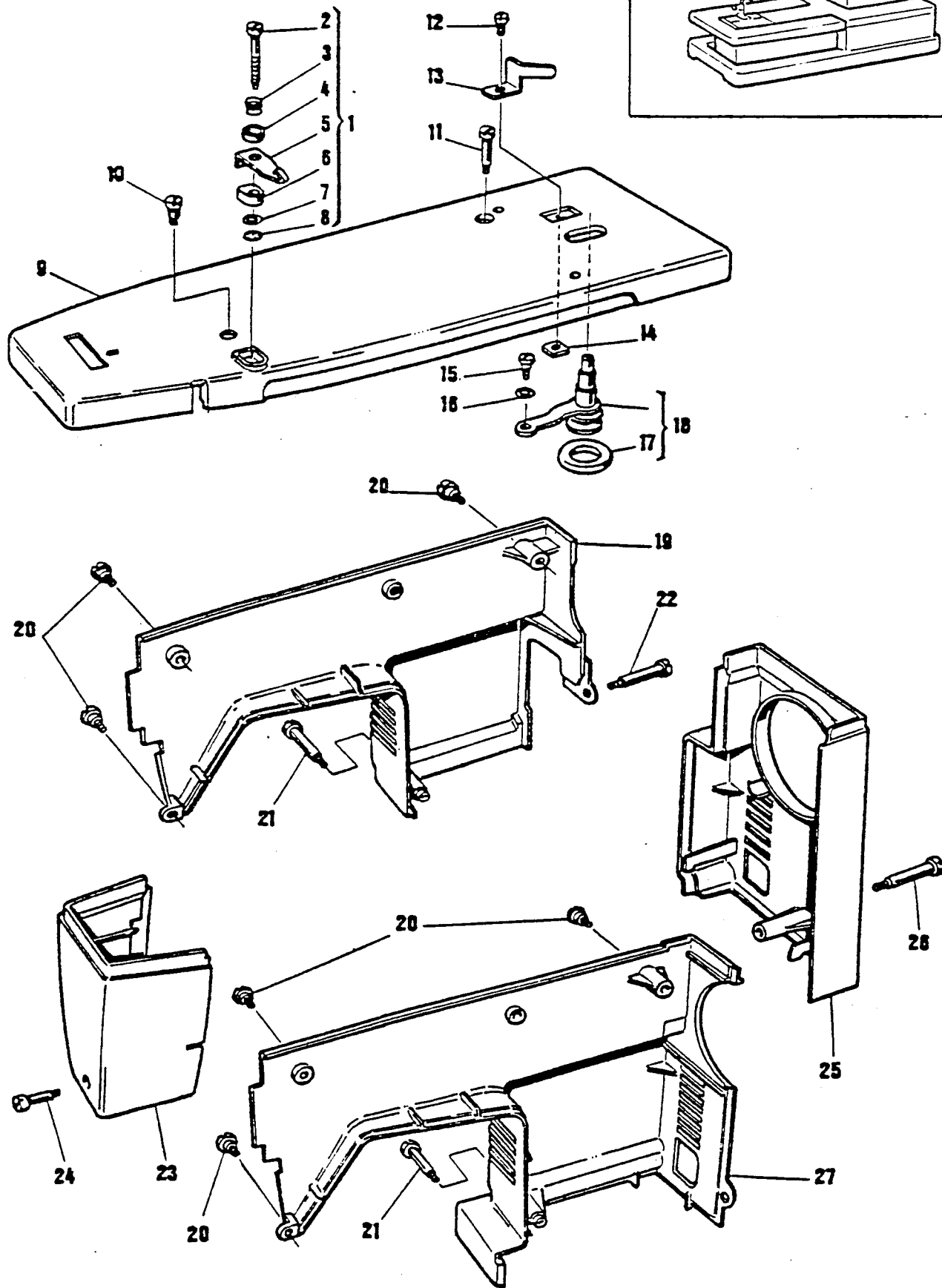
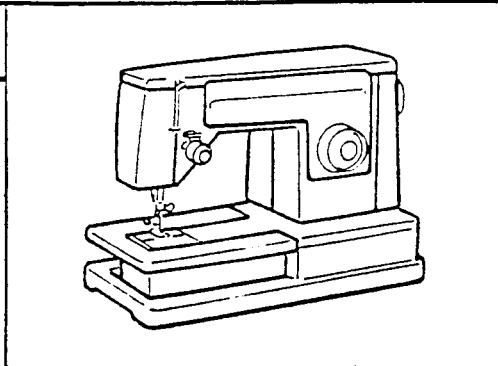


7



1

6100 series

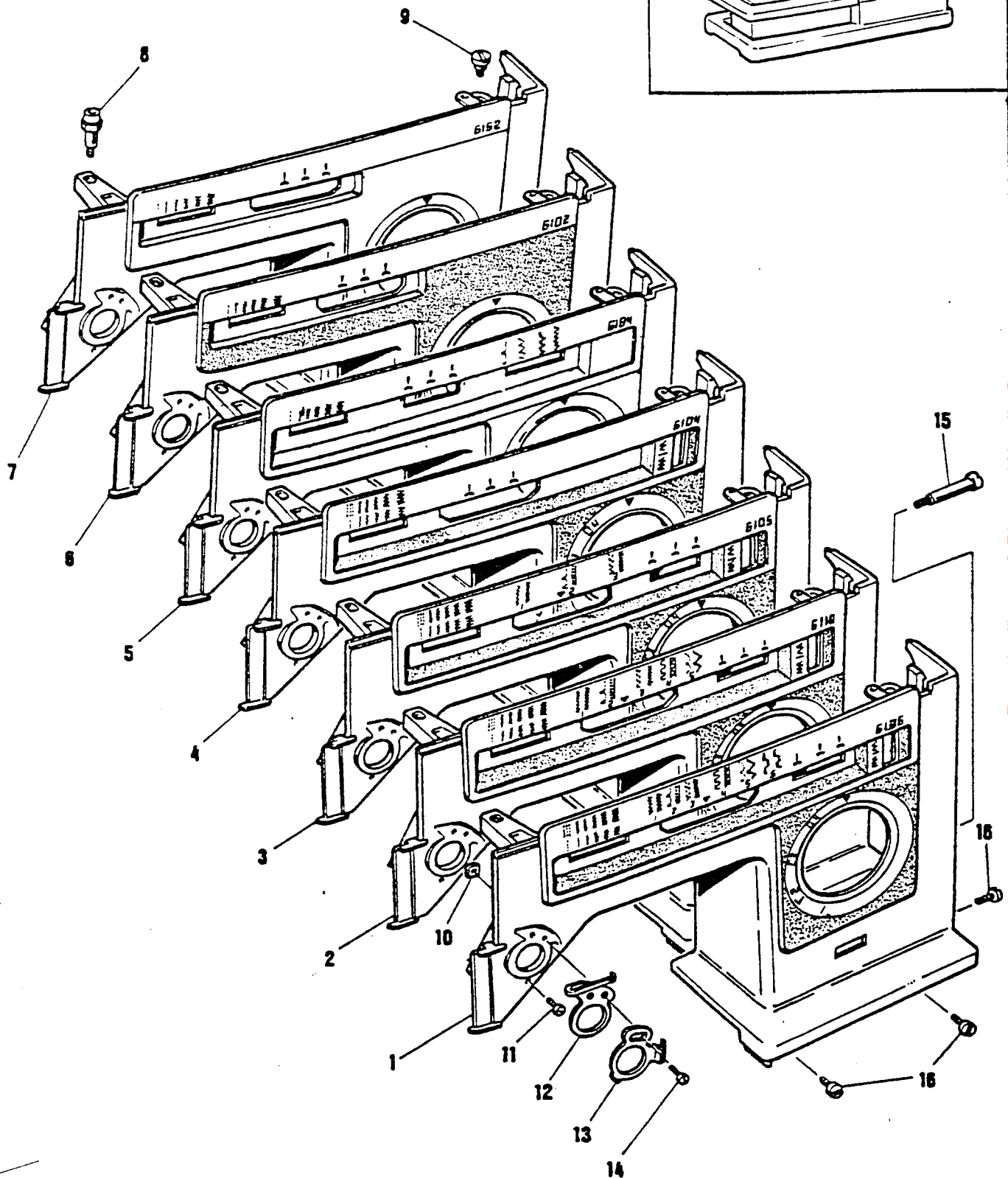
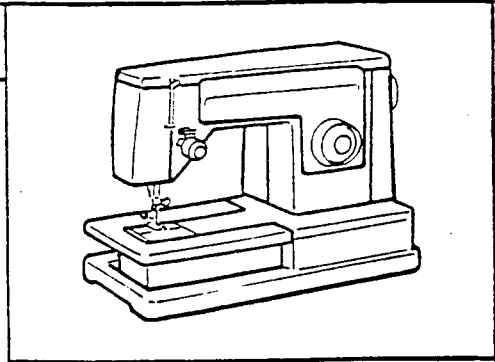


LIST OF PARTS FOR MACHINES 6100 SERIES

REF. N.	PART. N.	6174	6184	6100	6106	6105	6104	6102	PART DESCRIPTION
1	422069-451	X	X	X	X	X	X	X	Bobbin winder tension cpl.
2	44751	X	X	X	X	X	X	X	Bobbin winder tension stud
3	45847	X	X	X	X	X	X	X	Tension disc spring
4	45915	X	X	X	X	X	X	X	Tension disc
5	319717	X	X	X	X	X	X	X	Tension bracket and thread guide
6	44770-459	X	X	X	X	X	X	X	Tension bracket spacer
7	352737	X	X	X	X	X	X	X	Tension stud washer
8	44447	X	X	X	X	X	X	X	Tension stud retaining ring
9	421664-451	X	X	X	X	X	X	X	Arm top cover (with insert)
10	421720	X	X	X	X	X	X	X	Arm top cover screw (left)
11	141788	X	X	X	X	X	X	X	Arm top cover screw (right)
12	141808	X	X	X	X	X	X	X	Bobbin winder stop screw
13	44365	X	X	X	X	X	X	X	Bobbin winder stop
14	53640	X	X	X	X	X	X	X	Bobbin winder stop screw nut
15	422025-451	X	X	X	X	X	X	X	Hinge screw
16	352026	X	X	X	X	X	X	X	Hinge screw washer
17	15287-701	X	X	X	X	X	X	X	Friction ring
18	421960	X	X	X	X	X	X	X	Bobbin winder cpl.
19	421652-451	X							Arm cover (back)
20	139910	X	X	X	X	X	X	X	Arm cover (back) screw (3)
21	354252-451	X	X	X	X	X	X	X	Arm cover (back) screw
22	354659-451	X							Arm cover (back and front) screw
23	421653-451	X	X	X	X	X	X	X	Face plate
24	514727-451	X	X	X	X	X	X	X	Face plate screw
25	421654-451	X							Arm cover (hand wheel side)
26	354655-451	X							Arm cover (hand Wheel side) screw
27	422439-451		X	X	X	X	X	X	Arm cover (back)

1

6100 series



From the library of: Diamond Needle Corp

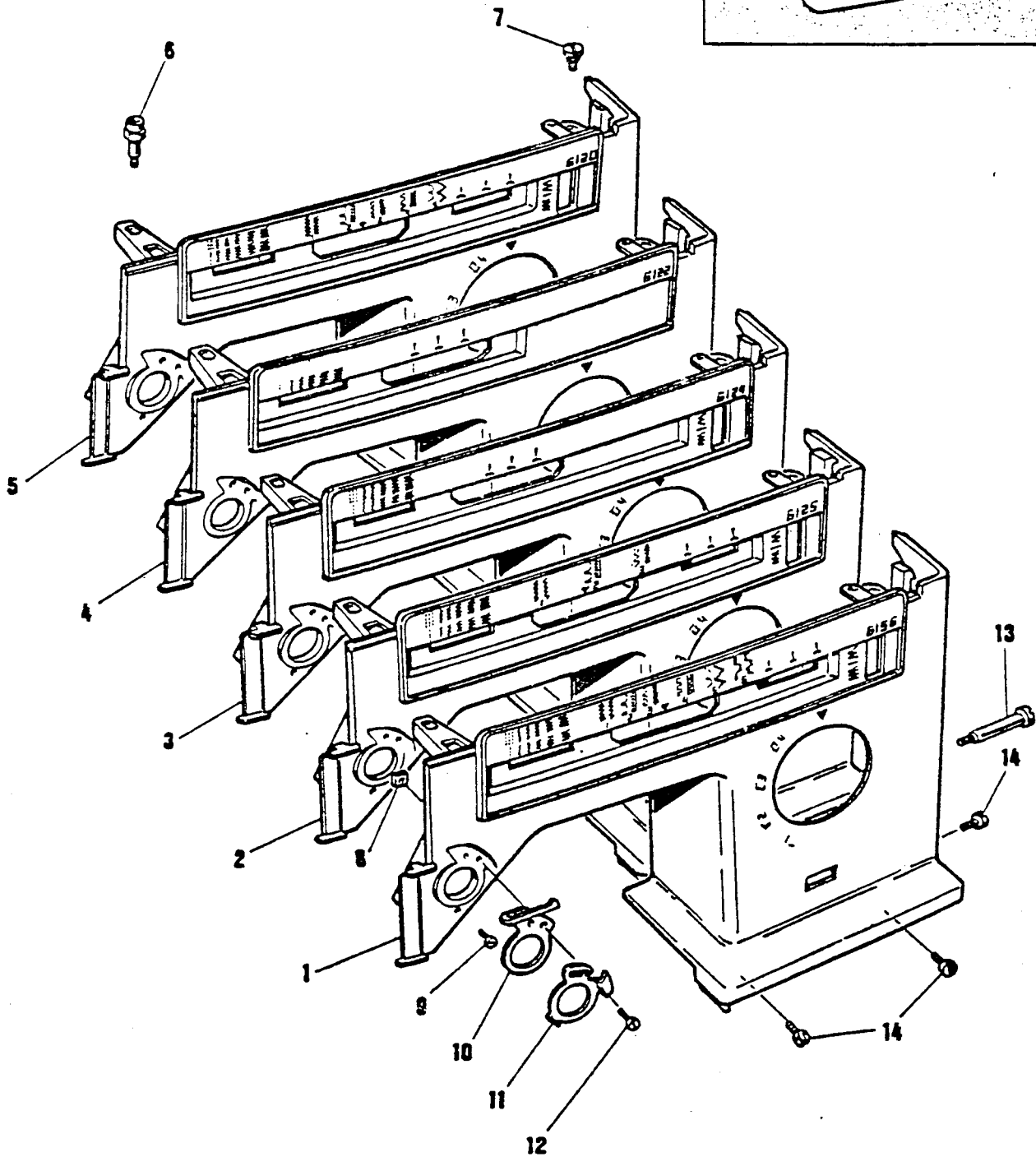
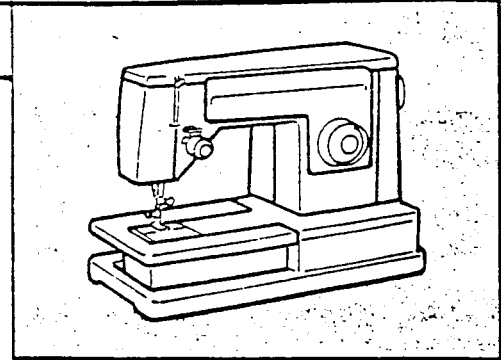
LIST OF PARTS FOR MACHINES 6100 SERIES

REF. N.	PART. N.	6136	6106	6110	6105	6184	6104	6102	6152	PART DESCRIPTION
1	422444 ●●●	X	X							Arm front cover cpl.
	422445 ●●●	X								Arm front cover cpl.
	422466 ●●●	X								Arm front cover cpl. (USA only)
2	422465 ●●●			X						Arm front cover cpl.
	422465-452			X						Arm front cover cpl. (for model <u>6130 only</u>)
3	422443 ●●●				X					Arm front cover cpl.
4	422442 ●●●						X			Arm front cover cpl.
5	422092 -451					X				Arm front cover cpl.
6	422446 ●●●							X		Arm front cover cpl.
7	422456-458								X	Arm front cover cpl.
8	421719-451	X	X	X	X	X	X	X	X	Arm front cover screw (upper, left)
9	421720	X	X	X	X	X	X	X	X	Arm front cover screw (upper, right)
10	53640	X	X	X	X	X	X	X	X	Nut
11	141808	X	X	X	X	X	X	X	X	Arm front cover screw (lower, left)
12	446958	X	X	X	X	X	X	X	X	Thread guide (upper)
13	44392	X	X	X	X	X	X	X	X	Tension thread guide
14	141808	X	X	X	X	X	X	X	X	Screw
15	422463-451	X	X	X	X	X	X	X	X	Arm cover (hand wheel side) screw
16	139910	X	X	X	X	X	X	X	X	Bed cover screw (3)

●●● Suffix 451 for M003 variety
 Suffix 452 for M013 variety
 Suffix 453 for M023 variety
 Suffix 454 for M033 variety
 Suffix 455 for M043 variety

1

6100 series



From the library of: Diamond Needle Corp

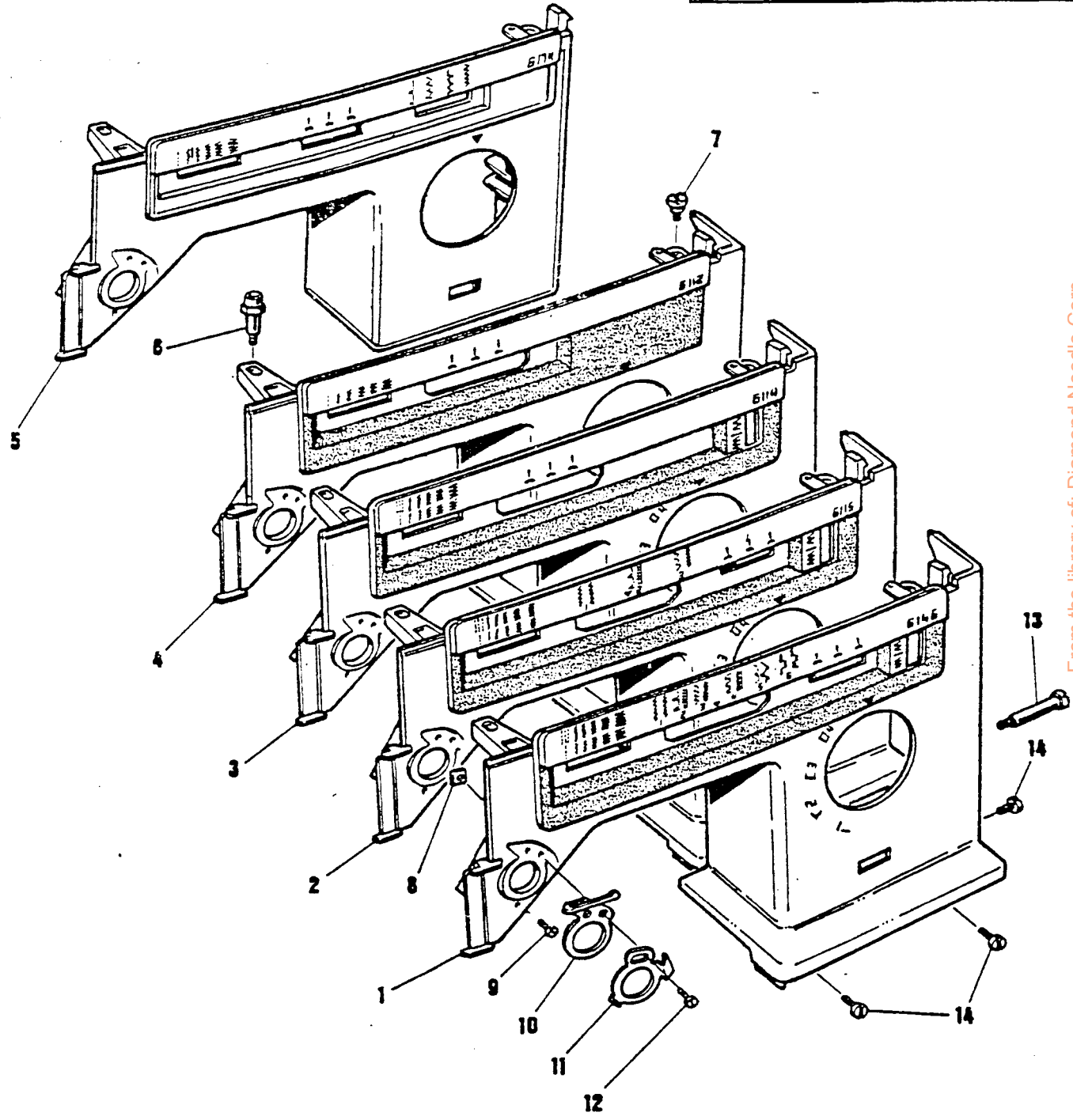
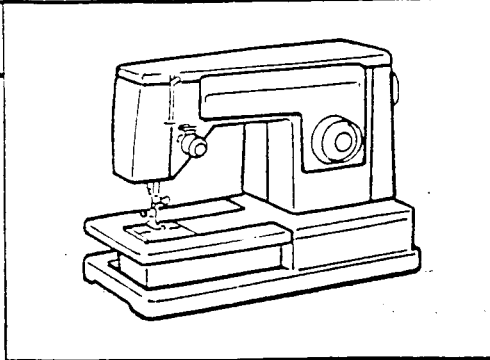
LIST OF PARTS FOR MACHINES 6100 SERIES

REF. N.	PART. N.	6126	6156	6125	6124	6122	6120	PART DESCRIPTION
1	422455 ●●●		X					Arm front cover cpl.
	422454 ●●●	X						Arm front cover cpl.
2	422453 ●●●			X				Arm front cover cpl.
3	422452 ●●●				X			Arm front cover cpl.
4	422456 ●●●					X		Arm front cover cpl.
5	422263-451						X	Arm front cover cpl.
6	421719-451	X	X	X	X	X	X	Arm front cover screw (upper, left)
7	421720	X	X	X	X	X	X	Arm front cover screw (upper, right)
8	53640	X	X	X	X	X	X	Nut
9	141808	X	X	X	X	X	X	Arm front cover screw (lower, left)
10	446958	X	X	X	X	X	X	Thread guide (upper)
11	44392	X	X	X	X	X	X	Tension thread guide
12	141808	X	X	X	X	X	X	Screw
13	422463-451	X	X	X	X	X	X	Arm cover (hand wheel side) screw
14	139910	X	X	X	X	X	X	Bed cover screw (3)

●●● Suffix 451 for M003 variety
 Suffix 452 for M013 variety
 Suffix 453 for M023 variety
 Suffix 454 for M033 variety
 Suffix 455 for M043 variety
 Suffix 456 for M053 variety

1

6100 series



From the library of: Diamond Needle Corp

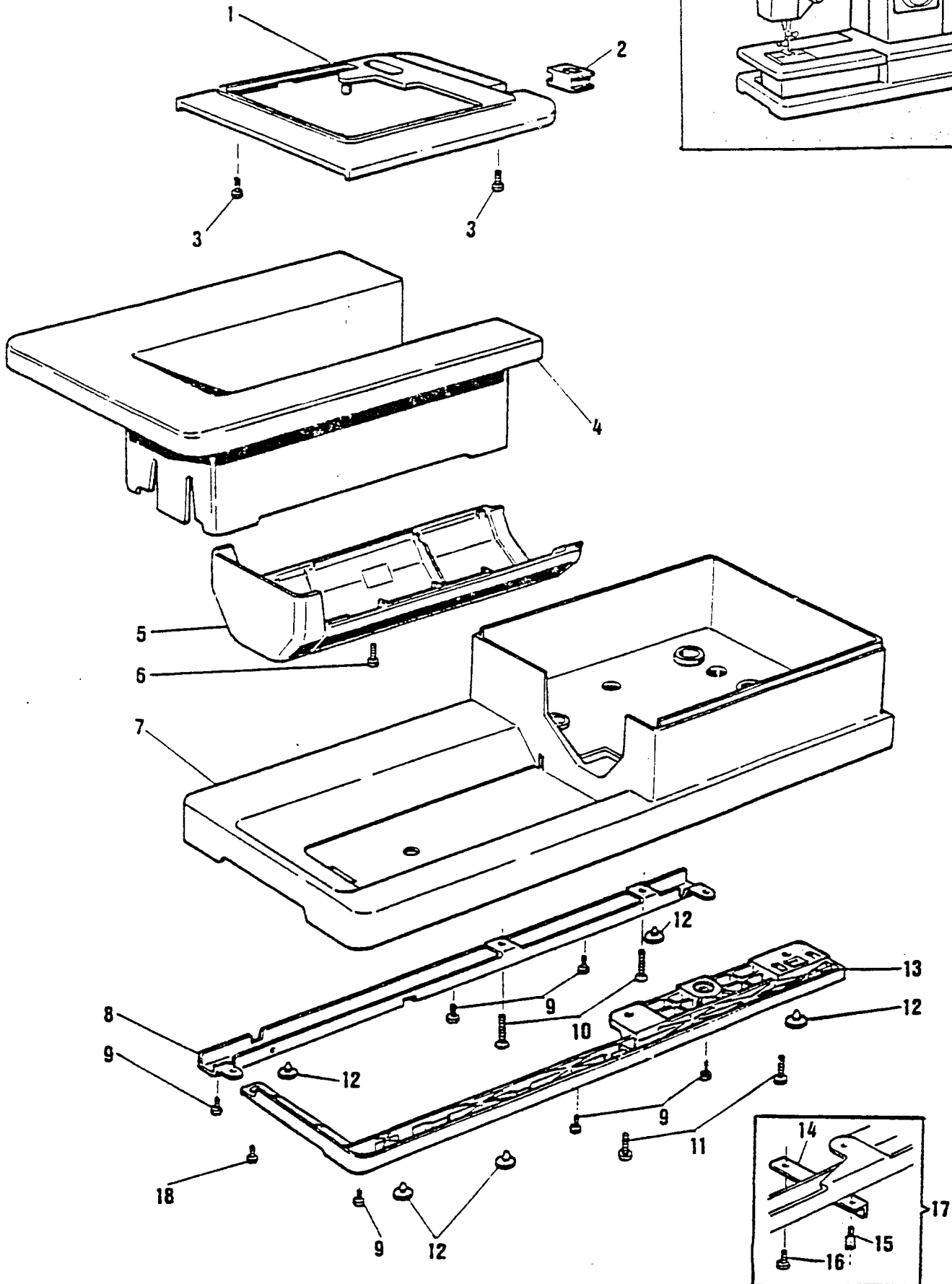
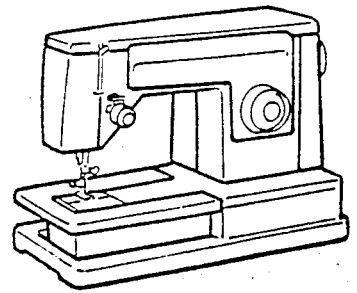
LIST OF PARTS FOR MACHINES 6100 SERIES

REF. N.	PART. N.	6174	6146	6115	6114	6112				PART DESCRIPTION
1	422450 ●●●		X							Arm front cover cpl.
	422449 ●●●		X							Arm front cover cpl. (USA only)
2	422448 ●●●			X						Arm front cover cpl.
3	422447 ●●●				X					Arm front cover cpl.
4	422451 ●●●					X				Arm front cover cpl.
5	422259-451	X								Arm front cover cpl.
6	421719-451	X	X	X	X	X				Arm front cover screw (upper , left)
7	421720	X	X	X	X	X				Arm front cover screw (upper, right)
8	53640	X	X	X	X	X				Nut
9	141808	X	X	X	X	X				Arm front cover screw (lower, left)
10	446958	X	X	X	X	X				Thread guide (upper)
11	44392	X	X	X	X	X				Tension thread guide
12	141808	X	X	X	X	X				Screw
13	422463-451		X	X	X	X				Arm cover (hand wheel side) screw
14	139910		X	X	X	X				Bed cover screw (3)

●●● Suffix 451 for M003 variety
 Suffix 452 for M013 variety
 Suffix 453 for M023 variety
 Suffix 454 for M033 variety
 Suffix 455 for M043 variety

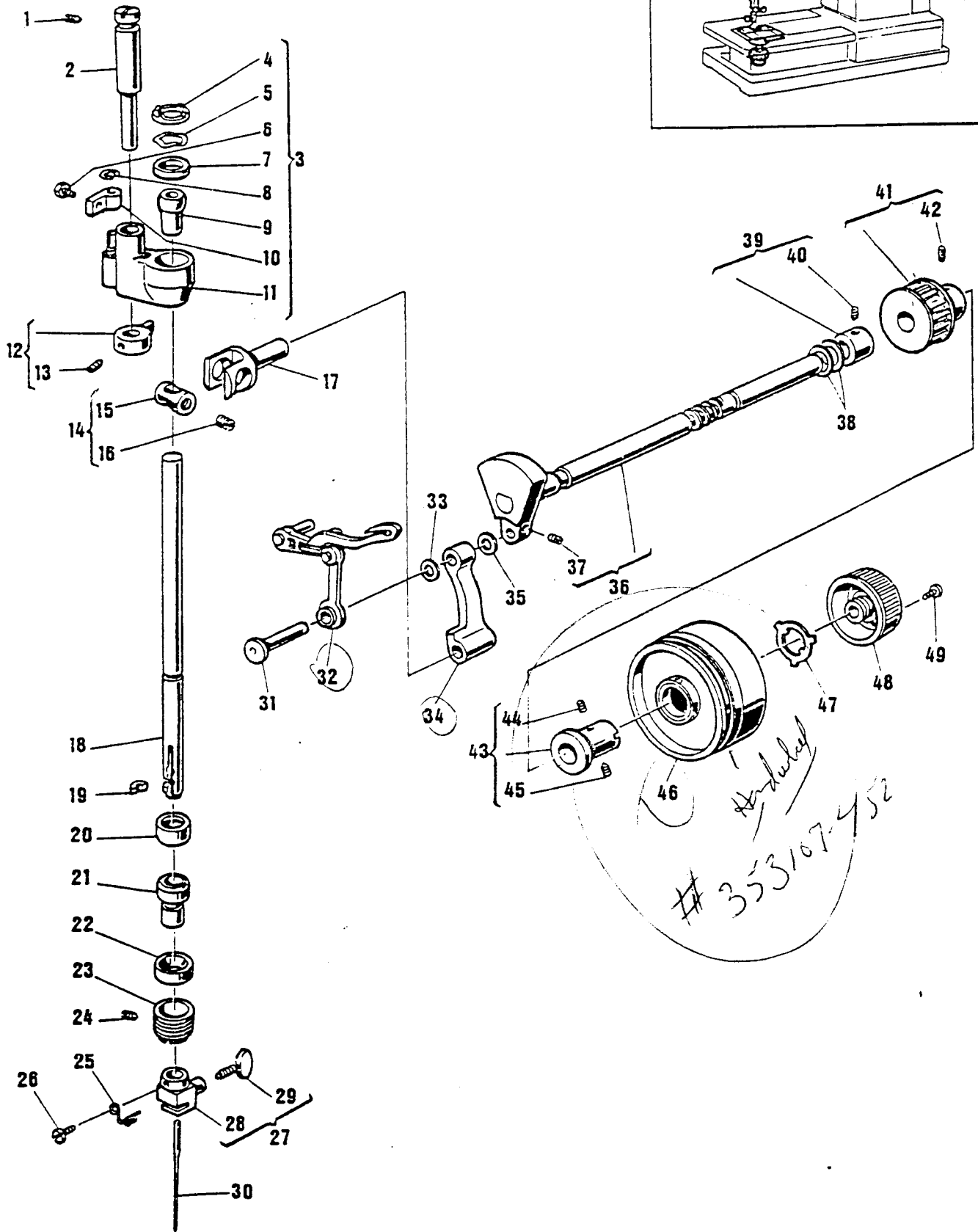
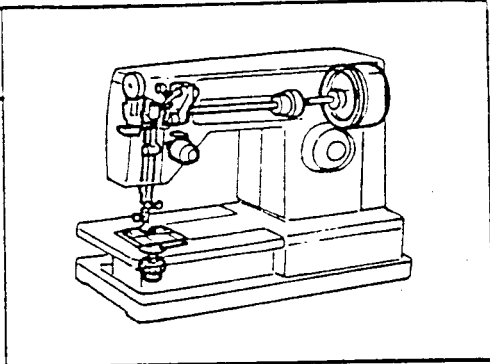
1

6100 series



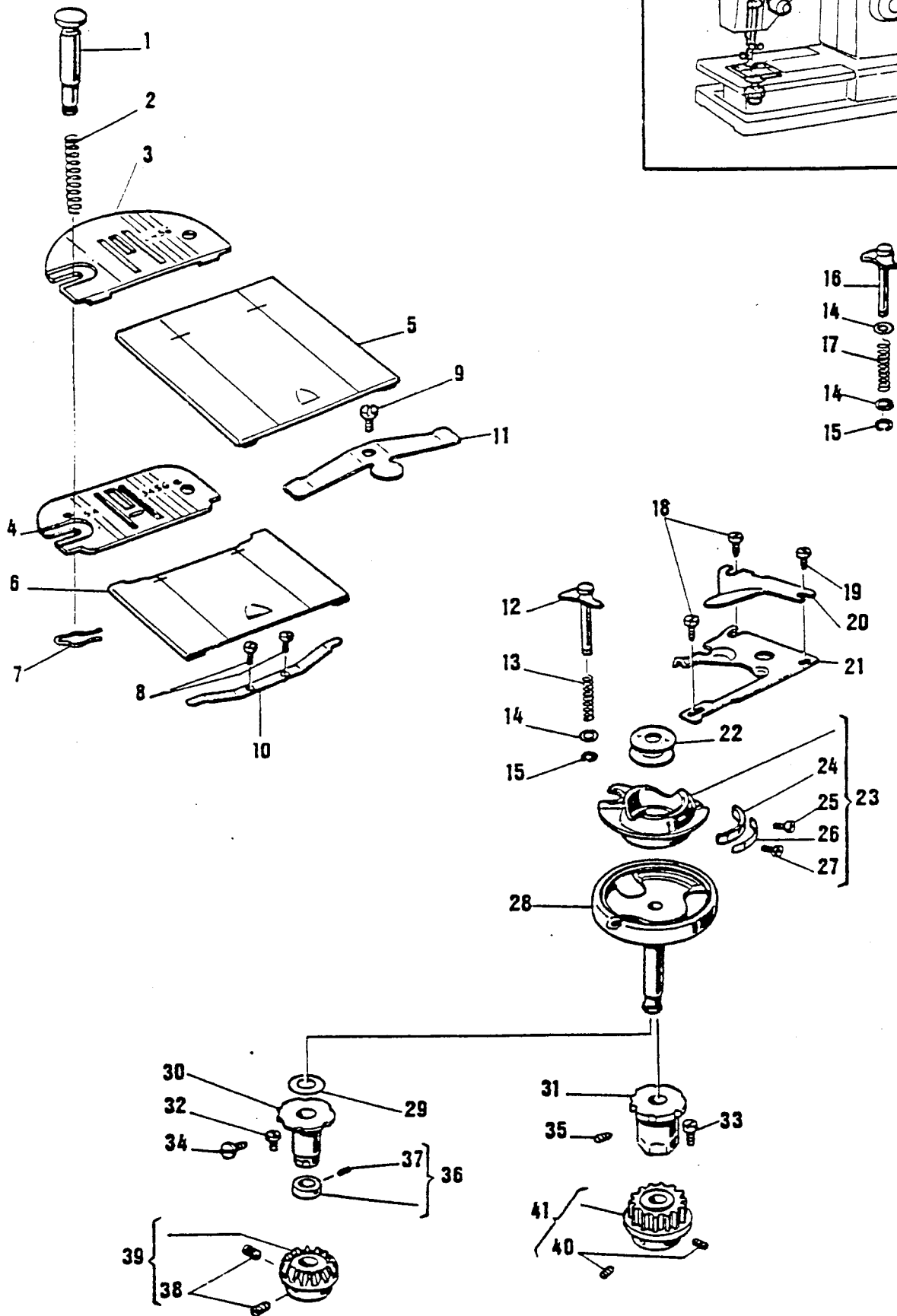
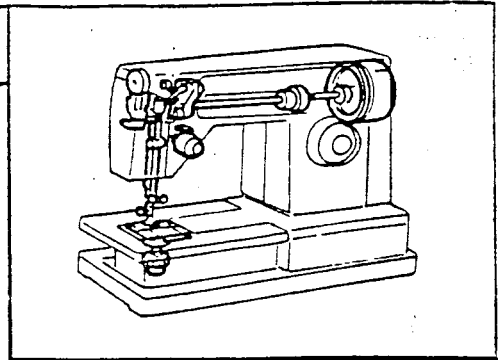
LIST OF PARTS FOR MACHINES 6100 SERIES

REF. N.	PART. N.	6174	6184	6100	6106	6105	6104	6102	PART DESCRIPTION
1	422472-452	X							Bed cover
2	352584	X							Grommet
3	139986	X							Bed cover screw (4)
4	421657-451		X	X	X	X	X	X	Cloth plate
5	352839-452		X	X	X	X	X	X	Bed cover (tubular)
6	514690-451		X	X	X	X	X	X	Bed cover (tubular) screw
7	421655-451		X	X	X	X	X	X	Machine base
8	421660		X	X	X	X	X	X	Machine base support back
9	354738-451		X	X	X	X	X	X	Machine support (back and front) screw (8)
10	354790-451		X	X	X	X	X	X	Base support (back) screw (2)
11	354745-451		X	X	X	X	X	X	Base support (front) screw (2)
12	352797		X	X	X	X	X	X	Machine base cushion (5)
13	421736		X	X	X	X	X	X	Machine base support
14	352795		X	X	X	X	X	X	Bracket (<u>for cabinets only</u>)
15	422481-451		X	X	X	X	X	X	Cushion (<u>for cabinets only</u>)
16	354745-451		X	X	X	X	X	X	Bracket screw (<u>for cabinets only</u>)
17	353035		X	X	X	X	X	X	Kit cpl. (<u>for cabinets only</u>)
18	421712		X	X	X	X	X	X	Screw



LIST OF PARTS FOR MACHINES 6100 SERIES

REF. N.	PART. N.	6174	6184	6100	6106	6105	6104	6102	PART DESCRIPTION
1	141918	X	X	X	X	X	X	X	Screw
2	445124	X	X	X	X	X	X	X	Hinge pin eccentric
3	422318	X	X	X	X	X	X	X	Needle bar vibrating bracket cpl.
4	422320	X	X	X	X	X	X	X	Retaining ring
5	502354	X	X	X	X	X	X	X	Washer
6	354621-451	X	X	X	X	X	X	X	Screw
7	507379	X	X	X	X	X	X	X	Ball bushing (upper) socket
8	507343	X	X	X	X	X	X	X	Retaining ring
9	37927	X	X	X	X	X	X	X	Ball bushing (upper)
10	37934	X	X	X	X	X	X	X	Bracket
11	422404	X	X	X	X	X	X	X	Vibrating bracket with hinge pin
12	44673	X	X	X	X	X	X	X	Hinge pin (eccentric) collar
13	141940	X	X	X	X	X	X	X	Set screw
14	37932	X	X	X	X	X	X	X	Needle bar connecting stud hinge pin cpl.
15	37931	X	X	X	X	X	X	X	Needle bar connecting stud hinge pin
16	141916	X	X	X	X	X	X	X	Set screw
17	37930	X	X	X	X	X	X	X	Needle bar connecting stud
18	352912	X	X	X	X	X	X	X	Needle bar
19	37943	X	X	X	X	X	X	X	Needle bar gib
20	44450	X	X	X	X	X	X	X	Ball bushing (lower) socket (upper)
21	37927	X	X	X	X	X	X	X	Ball bushing (lower)
22	507379	X	X	X	X	X	X	X	Ball bushing (lower) socket (lower)
23	44473	X	X	X	X	X	X	X	Ball bushing (lower) adjusting screw
24	141803	X	X	X	X	X	X	X	Set screw
25	319721	X	X	X	X	X	X	X	Needle clamp thread guide
26	141808	X	X	X	X	X	X	X	Screw
27	319729	X	X	X	X	X	X	X	Needle clamp cpl.
28	319728	X	X	X	X	X	X	X	Needle clamp body
29	511171	X	X	X	X	X	X	X	Needle thumb screw
30	Cat. 2045			X	X	X			Needle size 14 (fitted on machine)
	Cat. 2020								Needle size 14 (fitted on machine)
31	422310	X	X	X	X	X	X	X	Thread take-up stud
32	422307	X	X	X	X	X	X	X	Thread take-up
33	421356	X	X	X	X	X	X	X	Washer
34	352753	X	X	X	X	X	X	X	Needle bar connecting link
35	352754	X	X	X	X	X	X	X	Washer
36	352573	X	X	X	X	X	X	X	Arm shaft .
37	354105	X	X	X	X	X	X	X	Thread take-up crank set screw
38	319764	X	X	X	X	X	X	X	Washer (2)
39	179861	X	X	X	X	X	X	X	Arm shaft retaining collar cpl.
40	141916	X	X	X	X	X	X	X	Set screw
41	353239		X	X	X	X	X	X	Arm shaft belt drive pulley cpl.
42	141918		X	X	X	X	X	X	Arm shaft belt drive pulley set screw
43	44679	X	X	X	X	X	X	X	Clamp stop motion flanged bushing cpl.
44	141916	X	X	X	X	X	X	X	Set screw
45	141915	X	X	X	X	X	X	X	Flanged bushing positioning screw
46	353107-452	X	X	X	X	X	X	X	Hand wheel
47	44464	X	X	X	X	X	X	X	Clamp stop motion clamp washer
48	352589-452	X	X	X	X	X	X	X	Clamp stop motion clamp screw
49	141914	X	X	X	X	X	X	X	Clamp stop motion clamp stop screw

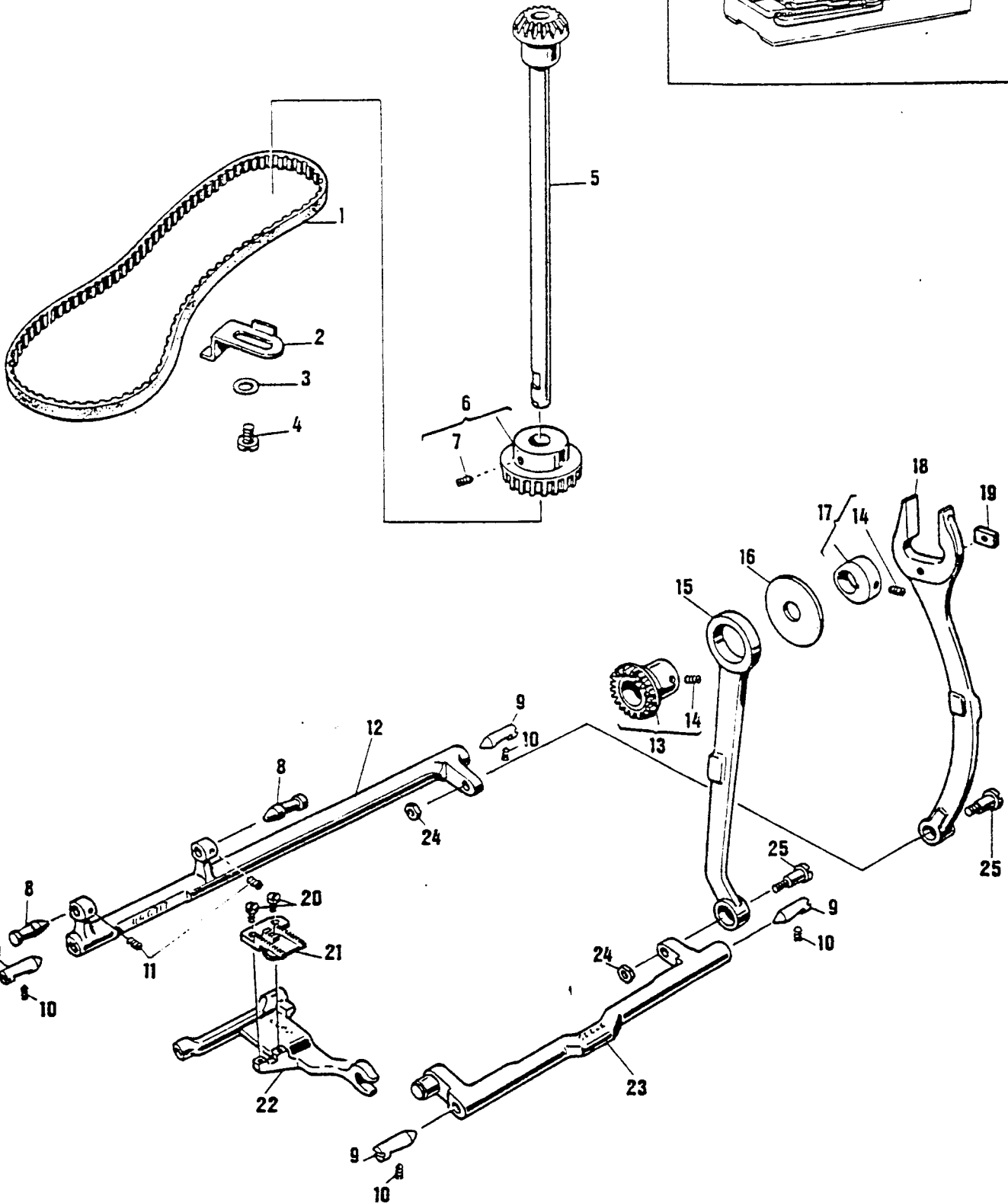
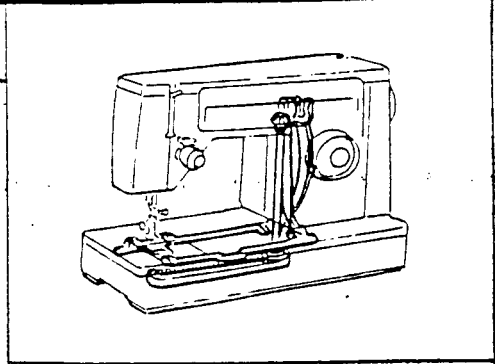


LIST OF PARTS FOR MACHINES 6100 SERIES

REF. N.	PART. N.	6174	6184	6100	6106	6105	6104	6102	PART DESCRIPTION
1	141920		X	X	X	X	X	X	Feed dog screw (2)
2	422406		X	X	X	X	X	X	Feed dog
3	422385		X	X	X	X	X	X	Feed bar cpl.
4	422335-000		X	X	X	X	X	X	Compensating link
5	422561-000		X	X	X	X	X	X	Retaining spring
6	511210		X	X	X	X	X	X	Washer
7	544100		X	X	X	X	X	X	Screw
8	511052		X	X	X	X	X	X	Stud
9	511213		X	X	X	X	X	X	Retaining ring
10	549308		X	X	X	X	X	X	Set screw
11	511211		X	X	X	X	X	X	Washer
12	422340		X	X	X	X	X	X	Bushing
13	514744-451		X	X	X	X	X	X	Feed bar guide pin screw
14	422338		X	X	X	X	X	X	Washer
15	422337-000		X	X	X	X	X	X	Retaining spring
16	421814		X	X	X	X	X	X	Feed bar guide pin
17	514556-451		X	X	X	X	X	X	Set screw
18	507917		X	X	X	X	X	X	Feed bar guide pin centre (black)
19	502310		X	X	X	X	X	X	Feed bar guide pin centre cpl. (front)
20	502309		X	X	X	X	X	X	Feed bar guide pin centre (front)
21	353195		X	X	X	X	X	X	Feed bar cpl. (Alternate To 422385)
22	511075		X	X	X	X	X	X	Retaining spring
23	141827		X	X	X	X	X	X	Screw stud
24	174216		X	X	X	X	X	X	Compensating link
25	174251		X	X	X	X	X	X	Washer
26	139878		X	X	X	X	X	X	Screw
27	174217		X	X	X	X	X	X	Stud
28	163562		X	X	X	X	X	X	Retaining ring
29	141812		X	X	X	X	X	X	Set screw
30	507822		X	X	X	X	X	X	Bushing
31	507824		X	X	X	X	X	X	Washer
32	514692		X	X	X	X	X	X	Feed bar guide pin screw
33	511056		X	X	X	X	X	X	Hinge stud (eccentric)
34	507063		X	X	X	X	X	X	Retaining ring
35	511016		X	X	X	X	X	X	Feed lifting fork connection
36	502744		X	X	X	X	X	X	Retaining ring
37	422388		X	X	X	X	X	X	Washer
38	422345		X	X	X	X	X	X	Hinge stud (eccentric)
39	422347		X	X	X	X	X	X	Drive connection
40	421875		X	X	X	X	X	X	Belt tension adjuster lever
41	511213		X	X	X	X	X	X	Retaining ring
42	514547		X	X	X	X	X	X	Set screw
43	511057		X	X	X	X	X	X	Hinge stud
44	422514		X	X	X	X	X	X	Feed lifting fork cpl.
45	422361		X	X	X	X	X	X	Feed eccentric
46	422325		X	X	X	X	X	X	Feed drive shaft gear cpl.
47	422324		X	X	X	X	X	X	Feed drive shaft
48	514556		X	X	X	X	X	X	Set screw
49	116073		X	X	X	X	X	X	Drive shaft washer
50	421035-001		X	X	X	X	X	X	Drive shaft belt
51	422395		X	X	X	X	X	X	Drive shaft bevel gear
52	507722		X	X	X	X	X	X	Rotating hook drive shaft spring washer
53	511213		X	X	X	X	X	X	Retaining ring
54	116073		X	X	X	X	X	X	Drive shaft washer
55	422394		X	X	X	X	X	X	Rotating hook drive shaft
56	422408		X	X	X	X	X	X	Drive shaft gear cpl.
57	514556		X	X	X	X	X	X	Set screw
58	352871		X	X	X	X	X	X	Drive shaft gear
59	421356		X	X	X	X	X	X	Damping washer

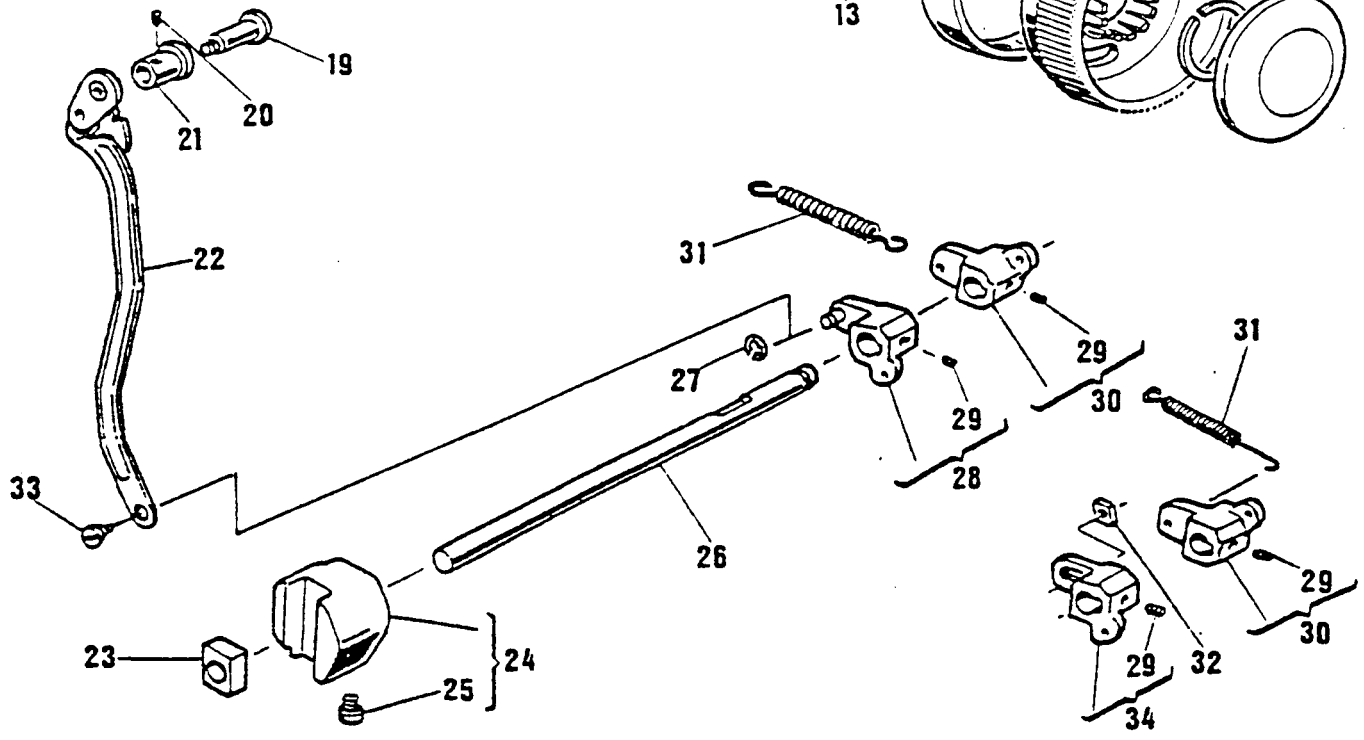
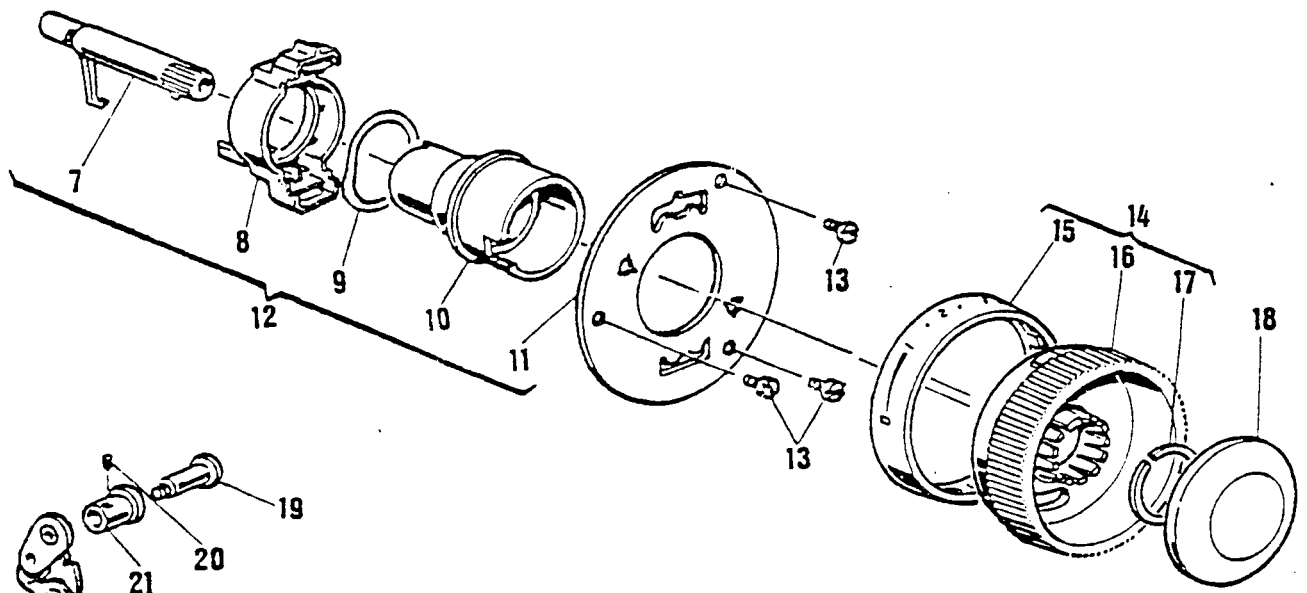
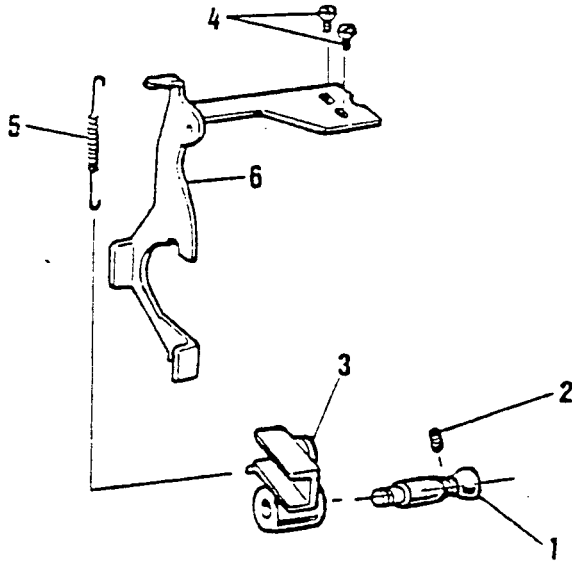
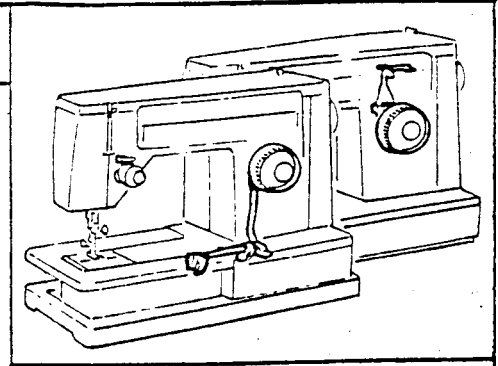
3

6100 series



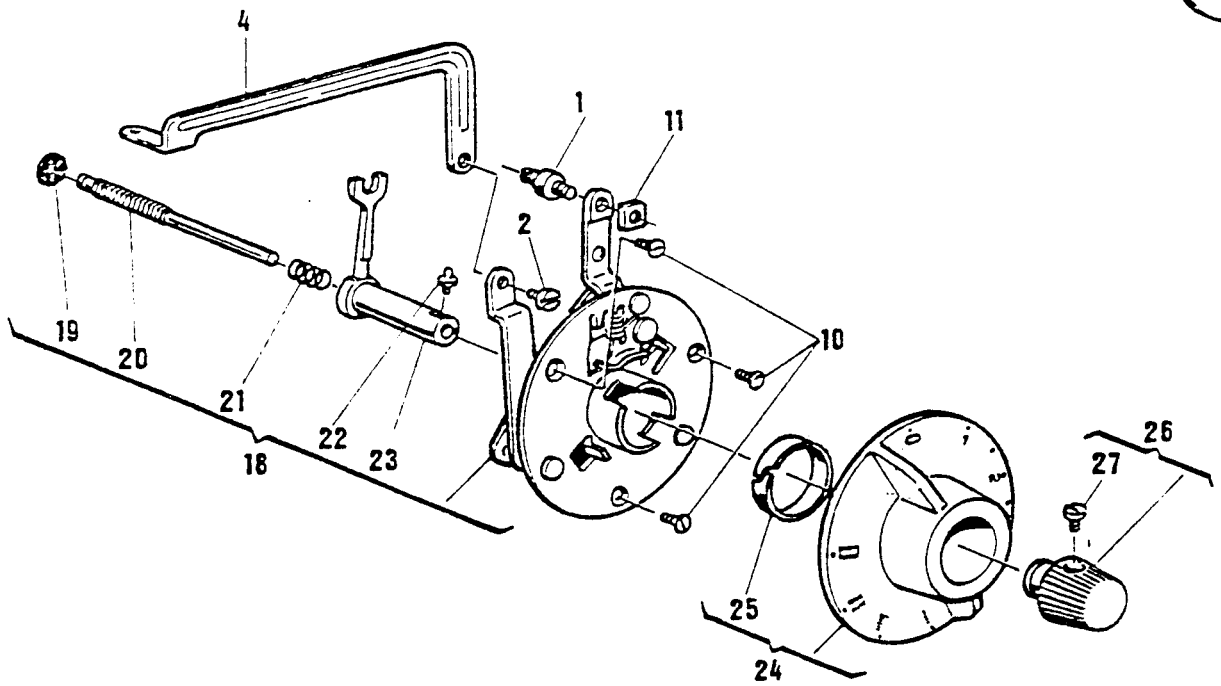
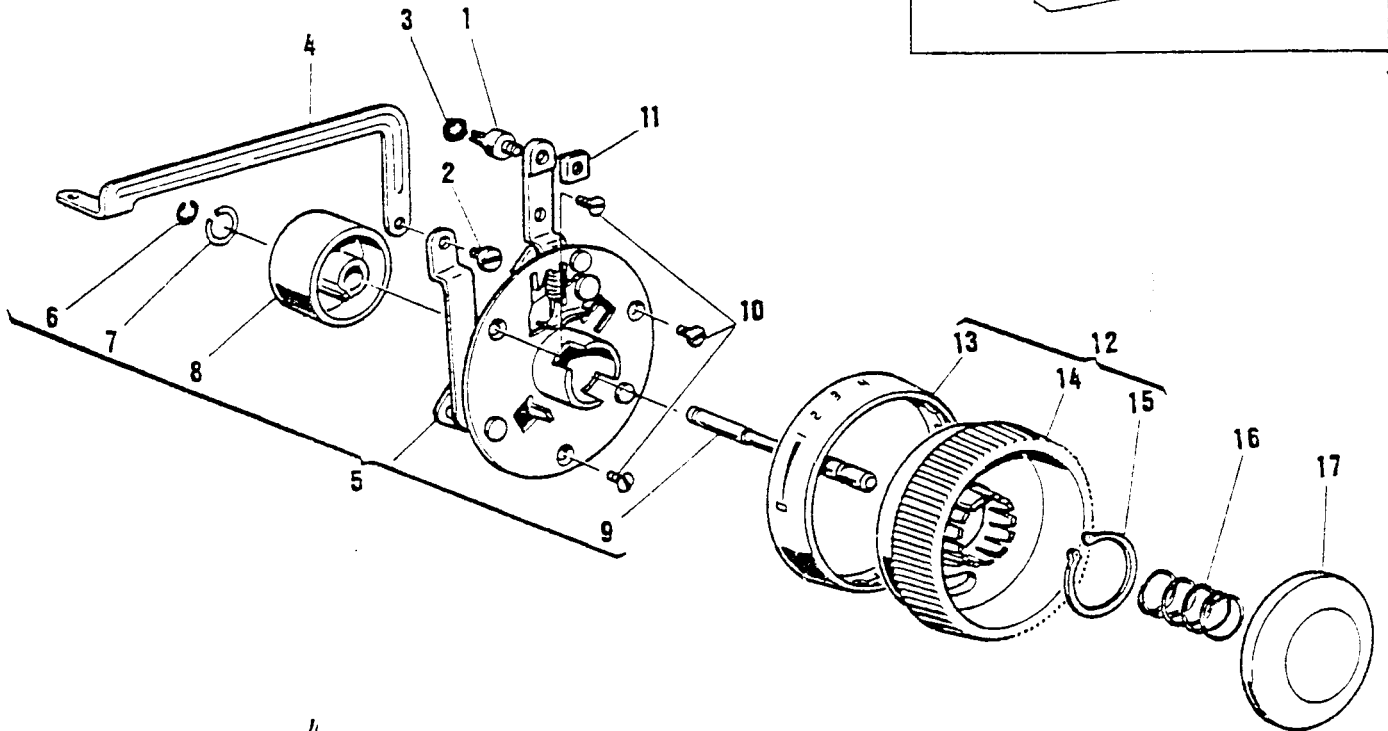
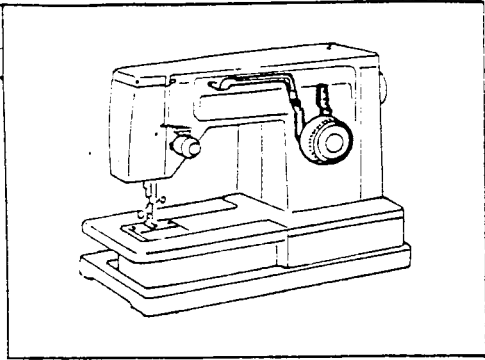
LIST OF PARTS FOR MACHINES 6100 SERIES

REF. N.	PART. N.	6174	6184	6100	6106	6105	6104	6102	PART DESCRIPTION
1	37977	X							Rotating hook drive belt
2	446736	X							Driving belt tension adjuster
3	446737	X							Friction washer
4	139909	X							Adjuster screw
5	37231	X							Arm shaft (upright)
6	446822	X							Belt drive pulley cpl.
7	141803	X							Set screw
8	446716	X							Feed bar centre (2)
9	179880	X							Feed lifting rock shaft centre
10	141925	X							Set screw (4)
11	141938	X							Set screw (2)
12	446717	X							Feed rock shaft
13	37229	X							Bevel gear and feed lifting cpl.
14	141918	X							Set screw
15	37288	X							Connecting rod
16	37284-001	X							Retaining washer
17	37281	X							Feed cam cpl.
18	37283	X							Feed forked connection
19	319820	X							Slide block
20	141920	X							Feed dog screw (2)
21	422407	X							Feed dog
22	37280	X							Feed bar
23	37286	X							Feed lifting rock shaft
24	53648	X							Nut
25	141805	X							Hinge screw (eccentric)



LIST OF PARTS FOR MACHINES 6100 SERIES

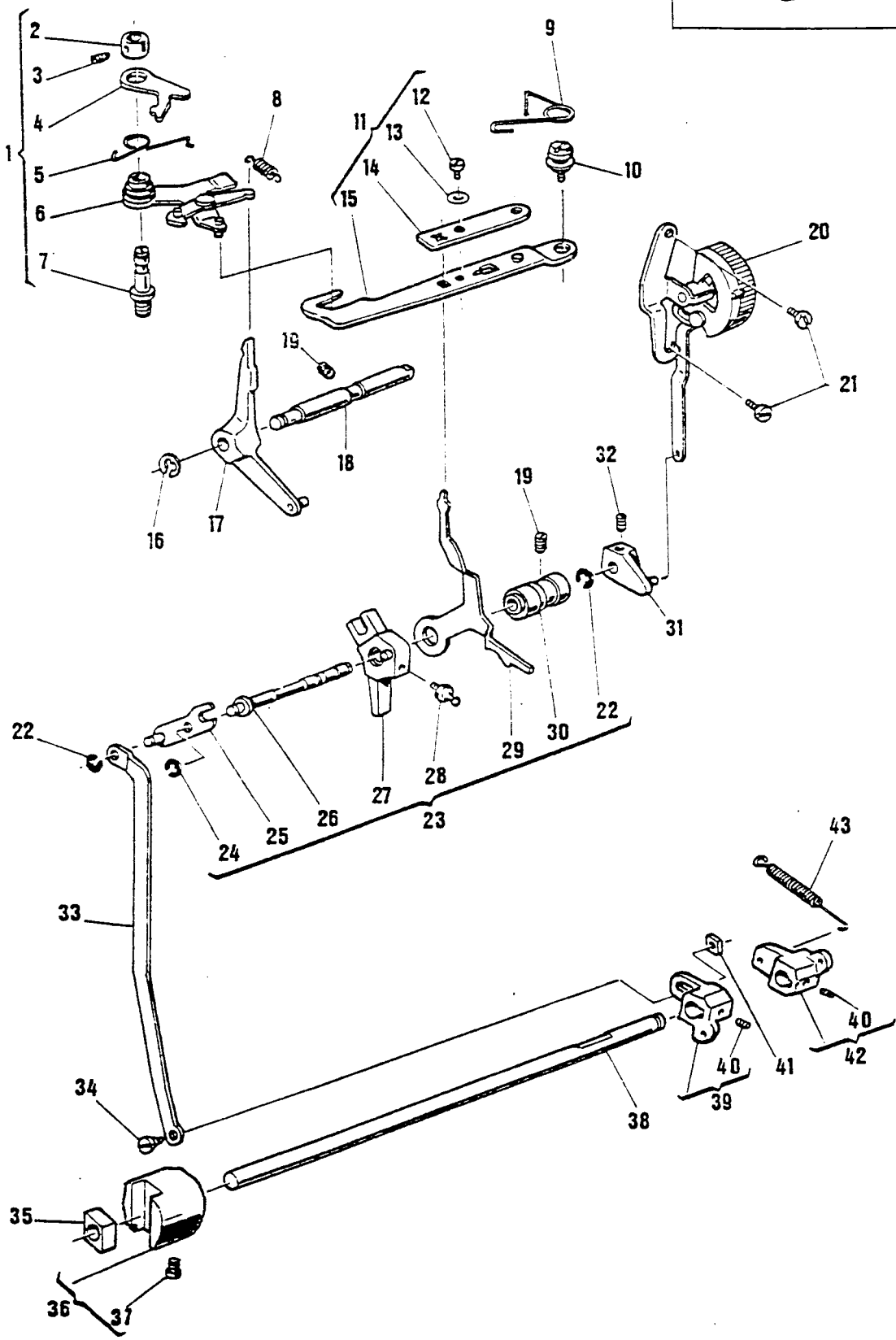
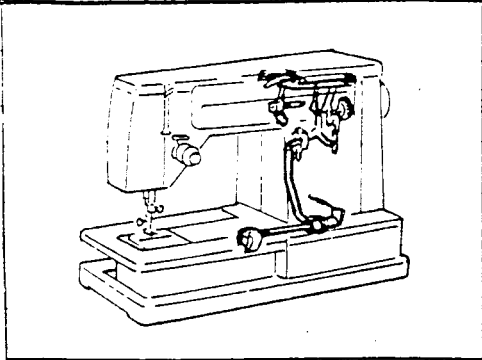
REF. N.	PART. N.	6174	6184	6100	6106	6105	6104	6102	PART DESCRIPTION
1	353182	X							Hinge screw
2	141803	X							Screw
3	353181	X							Feed regulator
4	354799	X							Bracket screw
5	37913	X							Feed regulator return spring
6	353179	X							Feed regulator control arm
7	422240							X	Positioning pin
8	422237							X	Feed regulator cam
9	422238							X	Friction spring
10	422236							X	Feed regulator cam
11	446932							X	Mounting plate
12	422253							X	Feed regulator cpl.
13	354799							X	Mounting plate screw
14	422001-451							X	Control dial cpl.
15	421750-451							X	Control dial ring
16	421737-451							X	Control dial
17	422083							X	Retaining ring
18	421738-451							X	Reverse feed push button
19	354733-451		X					X	Hinge screw
20	141803		X					X	Set screw
21	352801		X					X	Hinge screw bushing
22	422217		X					X	Feed regulator control arm
23	511030		X					X	Slide block
24	511484		X					X	Feed regulator cpl.
25	353126		X					X	Feed regulator set screw
26	422214		X					X	Feed regulator shaft
27	507063		X					X	Retaining ring
28	422210							X	Feed regulator
29	514509		X					X	Set screw
30	422209		X					X	Feed regulator
31	421959							X	Tension spring
31 a	353188		X						Tension spring
32	514698-451		X						Nut
33	353190		X						Screw
34	422212		X						Feed regulator



LIST OF PARTS FOR MACHINES 6100 SERIES

REF. N.	PART. N.	6174	6184	6100	6106	6105	6104	6102	PART DESCRIPTION
1	514745	X	X	X	X	X	X		Bearing screw
2	139866	X	X	X	X	X	X		Hinge screw
3	507063			X	X	X	X		Retaining ring
4	421926	X	X	X	X	X	X		Bight control lever link
5	422363			X	X	X	X		Buttonholer and feed regulator cpl.
6	507063			X	X	X	X		Retaining ring
7	421925			X	X	X	X		Retaining ring
8	421852			X	X	X	X		Feed regulator cam
9	421935			X	X	X	X		Reverse feed pin
10	139868	X	X	X	X	X	X		Screw
11	514698-451	X	X	X	X	X	X		Nut
12	422020-451			X	X	X			Control dial cpl. (Chromium plated)
	422019-451						X		Control dial cpl. (Chromium plated)
	422021-451				X	X	X		Control dial cpl. (Plastic colour)
	422021-451			X					Control dial cpl. (Plastic colour only for 6120)
13	421938-451			X	X	X	X		Control dial ring (with red mark)
	421938-452						X		Control dial ring (with yellow mark)
14	421864-451			X	X	X	X		Control dial (Chromium plated)
	421862-451				X	X	X		Control dial (Plastic colour)
	421862-451			X					Control dial (Plastic colour only for 6120)
15	421871			X	X	X	X		Retaining ring
16	421934			X	X	X	X		Pressure spring
17	421933-451			X	X	X	X		Reverse feed push button
18	422089	X							Buttonholer and feed regulator cpl.
18 a	353187		X						Buttonholer and feed regulator cpl.
19	446897	X							Retaining ring
20	352820	X							Feed regulator positioning pin
20 a	353185		X						Feed regulator positioning pin
21	446896	X	X						Friction spring
22	352583	X	X						Reverse feed cam follower
23	446918	X	X						Feed regulator positioning pin carrier.
24	353078-452	X	X						Control dial cpl.
25	445512	X	X						Retaining ring
26	445307-462	X	X						Feed regulator positioning pin knob
27	354592	X	X						Screw

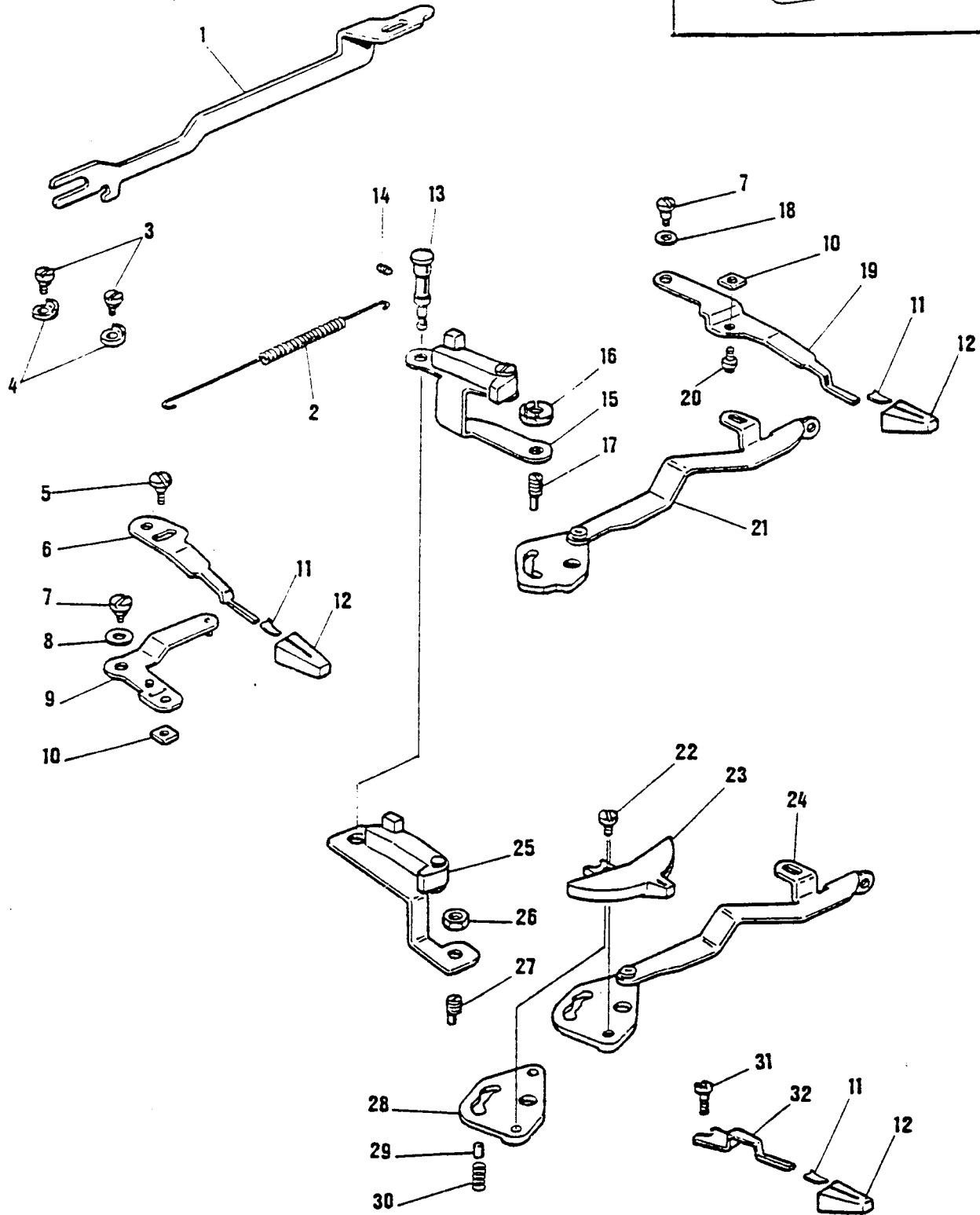
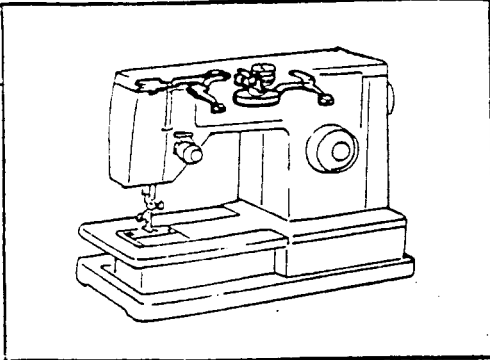
Rev feed push button
6100-421738-451



LIST OF PARTS FOR MACHINES 6100 SERIES

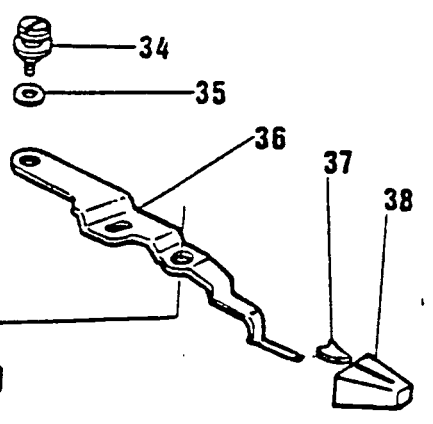
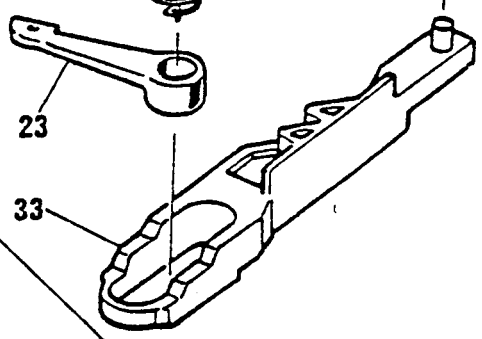
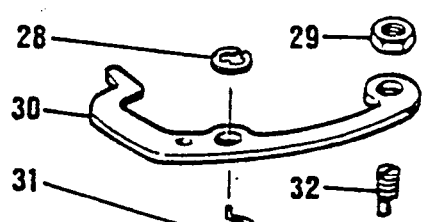
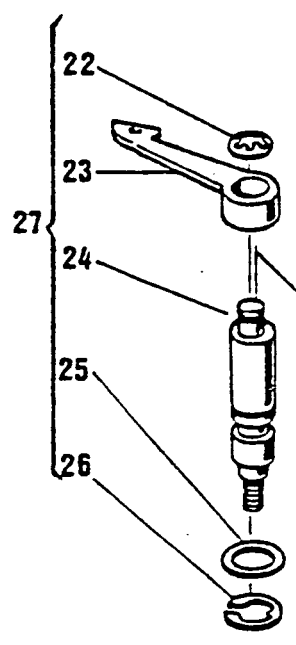
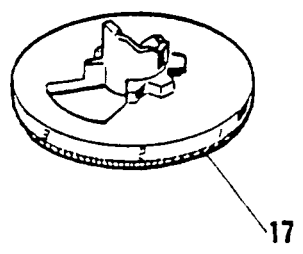
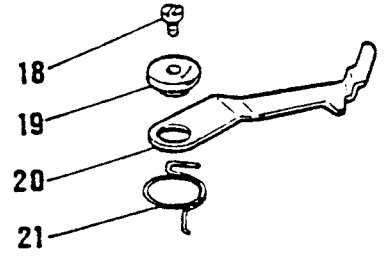
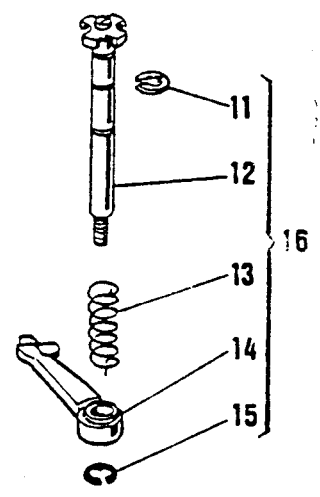
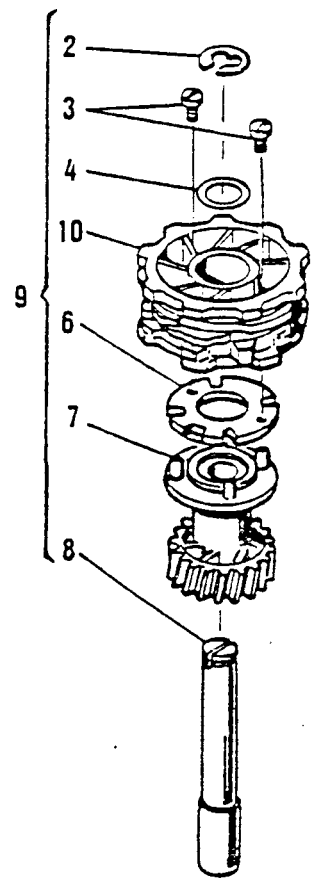
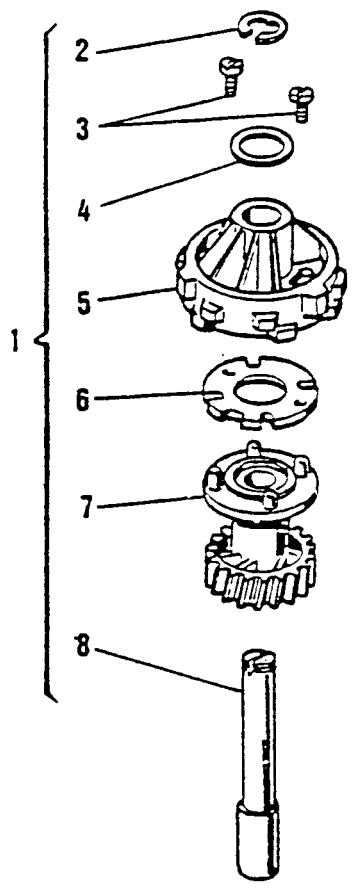
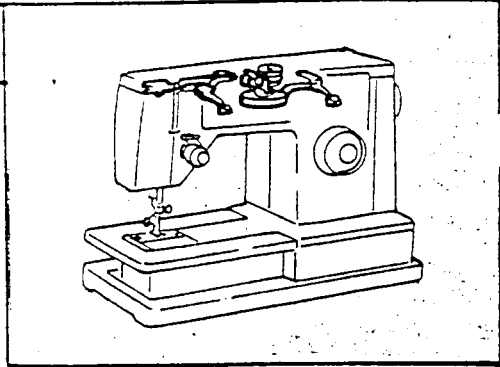
REF. N.	PART. N.	6174	6184	6100	6106	6105	6104	6102	PART DESCRIPTION
1	421997			X	X	X	X		Cam feed disc drive lever
2	353033			X	X	X	X		Feed shaft drive collar
3	354795-451			X	X	X	X		Set screw
4	421130			X	X	X	X		Cam feed disc follower
5	421138			X	X	X	X		Torsion spring
6	421133			X	X	X	X		Cam feed disc drive lever cpl.
7	421131			X	X	X	X		Bearing stud
8	421945			X	X	X	X		Tension spring
9	421950			X	X	X	X		Torsion spring
10	421949-451			X	X	X	X		Hinge screw
11	421946			X	X	X	X		Clutch lever cpl.
12	514554-451			X	X	X	X		Screw
13	506125			X	X	X	X		Washer
14	421948			X	X	X	X		Adjusting lever
15	421947			X	X	X	X		Clutch lever
16	511213			X	X	X	X		Retaining ring
17	421941			X	X	X	X		Transmission lever cpl.
18	421129			X	X	X	X		Transmission lever shaft (eccentric)
19	141803			X	X	X	X		Set screw
20	421951-452			X	X	X	X		Feed balancing bracket cpl. (<u>chromium plated</u>)
	421951-451			X	X	X	X		Feed balancing bracket cpl. (<u>plastic colour</u>)
	421951-451			X		X	X		Feed balancing bracket cpl. (<u>plastic colour only for 6120</u>)
21	354084			X	X	X	X		Screw
22	507309			X	X	X	X		Retaining ring
23	421989			X	X	X	X		Bearing stud cpl.
24	507343			X	X	X	X		Retaining ring
25	421991			X	X	X	X		Adjusting lever cpl.
26	421863			X	X	X	X		Bearing stud
27	421856			X	X	X	X		Feed regulator control arm
28	421857			X	X	X	X		Feed regulator control arm (ball)
29	421929			X	X	X	X		Actuating lever
30	421978			X	X	X	X		Eccentric bushing
31	421956			X	X	X	X		Driving arm eccentric
32	354085-451			X	X	X	X		Set screw
33	421931			X	X	X	X		Connection link
34	422244			X	X	X	X		Screw
35	511030			X	X	X	X		Slide block
36	511484			X	X	X	X		Feed regulator cpl.
37	351126			X	X	X	X		Feed regulator set screw
38	422214			X	X	X	X		Feed regulator shaft
39	422212			X	X	X	X		Feed regulator
40	514509			X	X	X	X		Set screw
41	514698-451			X	X	X	X		Nut
42	422209			X	X	X	X		Feed regulator
43	421959			X	X	X	X		Tension spring

6100 series



LIST OF PARTS FOR MACHINES 6100 SERIES

REF. N.	PART. N.	6174	6184	6100	6106	6105	6104	6102	PART DESCRIPTION
1	37933	X	X	X	X	X	X	X	Needle bar driving arm
2	37942	X	X	X	X	X	X	X	Tension spring
3	141787	X	X	X	X	X	X	X	Stop screw (2)
4	37248	X	X	X	X	X	X	X	Control lever link stop (2)
5	514730-451	X	X	X	X	X	X	X	Screw
	141913							X	Screw
6	421858	X	X	X	X	X	X	X	Bight amplitude control lever
7	141786	X	X	X	X	X	X	X	Hinge screw
8	49204	X	X	X	X	X	X		Friction washer
	446736							X	Friction washer
9	421984	X	X	X	X	X	X		Control lever link
	37246							X	Control lever link
10	514707-451	X	X	X	X	X	X		Nut
11	37244	X	X	X	X	X	X	X	Control lever knob spring clip
12	421883-451			X	X	X	X		Control lever knob (<u>Chromium plated</u>)
	421883-452	X	X	X	X	X	X	X	Control lever knob (<u>Plastic colour</u>)
13	37941	X	X	X	X	X	X	X	Hinge stud
14	354196-451	X	X	X	X	X	X	X	Set screw
15	421886			X	X	X			Slide bracket
16	179739-451			X	X	X			Eccentric screw stud nut
17	445347			X	X	X			Eccentric screw stud
18	49204			X	X	X			Friction washer
19	421859			X	X	X			Needle position lever
20	421893			X	X	X			Stud
21	421889			X	X	X			Needle position selector lever cpl.
22	139943						X	X	Screw
23	421895-451						X		Needle position selector dial (<u>Chromium plated</u>)
	421895-452						X	X	Needle position selector dial (<u>Plastic colour</u>)
24	422075						X		Needle position selector lever cpl.
25	319798						X	X	Slide bracket
26	53641						X	X	Eccentric screw stud nut
27	44471						X	X	Eccentric screw stud
28	37953						X	X	Bracket
29	37955	X	X	X	X	X	X	X	Positioning pin
30	37956	X	X	X	X	X	X	X	Positioning pin spring
31	141913	X	X						Screw
32	422428	X	X						Needle position lever

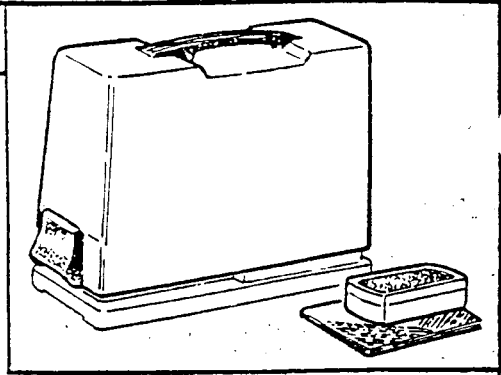


LIST OF PARTS FOR MACHINES 6100 SERIES

REF. N.	PART. N.	6174	6184	6100	6106	6105	6104	6102	PART DESCRIPTION
1	353175	X	X						Disc driving gear cpl.
1 a	422080						X	X	Disc driving gear cpl
2	422441	X	X	X	X	X	X	X	Retaining ring
3	422440	X	X	X	X	X	X	X	Disc positioning screw (2)
4	422074	X	X	X	X	X	X	X	Washer
5	422288						X	X	Disc stack
5 a	353174	X	X						Disc stack
6	422260	X	X	X	X	X	X	X	Disc mounting plate
7	422202	X	X	X	X	X	X	X	Disc driving gear
8	422073	X	X	X	X	X	X	X	Disc driving gear shaft
9	422079			X	X	X			Disc driving gear cpl.
10	422206			X	X	X			Disc stack
11	421912			X	X	X			Crescent ring
12	421898			X	X	X			Hinge stud
13	421897			X	X	X			Disc follower spring
14	421896			X	X	X			Disc follower
15	511213			X	X	X			Retaining ring
16	421730-451				X				Disc follower cpl.
	421731-451					X			Disc follower cpl.
	421732-452			X					Disc follower cpl.
17	421969-451				X				Disc selector dial (<u>Plastic colour</u>)
	421969-452				X				Disc selector dial (<u>Chromium plated</u>)
	422066-451					X			Disc selector dial (<u>Plastic colour</u>)
	422066-452					X			Disc selector dial (<u>Chromium plated</u>)
	422065-451			X					Disc selector dial (<u>Chromium plated</u>)
	422065-452			X					Disc selector dial (<u>Plastic colour</u>)
18	514733-451			X	X	X			Bushing screw
19	422230			X	X	X			Disengaging lever bushing
20	421901			X	X	X			Disengaging lever
21	421902			X	X	X			Disengaging lever spring
22	44735						X	X	Retaining ring
23	37262	X	X				X	X	Disc follower
24	422426	X	X				X	X	Disc follower stud
25	37276	X	X				X	X	Disc follower washer
26	44371	X	X				X	X	Retaining ring
27	422434						X	X	Disc follower stud cpl.
28	507063	X	X						Retaining ring
29	53641	X	X						Nut
30	422081	X	X						Disc follower disengaging lever
31	44419	X	X						Disc follower positioning spring
32	44471	X	X						Screw stud (eccentric)
33	353183	X	X						Disc selector cam slide
34	141786	X	X						Hinge screw
35	49204	X	X						Friction washer
36	422016	X	X						Disc selector lever
37	37244	X	X						Disc selector control lever knob spring clip
38	421883-452	X	X						Disc selector control lever knob (<u>Plastic colour</u>)

6

6100 series



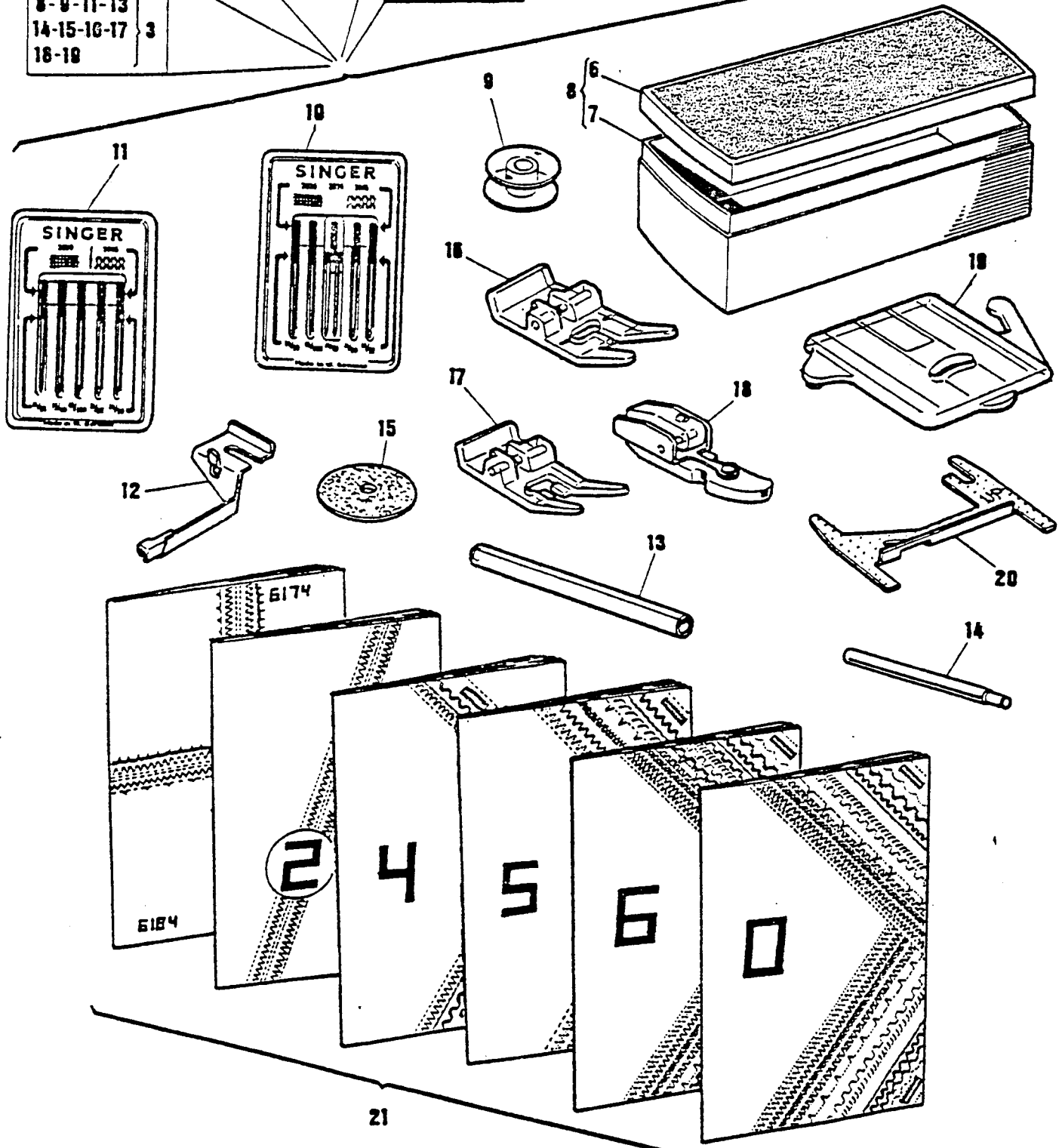
8-9-10-12
13-14-15-16 } 1
17-18-19

8-9-11-13
14-15-16-17 } 2
18-19

8-9-11-13
14-15-16-17 } 3
18-19

8-9-11
12-13-
14-15-16
17-18-20 } 4

8-9-11-12
13-14-15-16
17-18-19 } 5



From the library of: Diamond Needle Corp

LIST OF PARTS FOR MACHINES 6100 SERIES

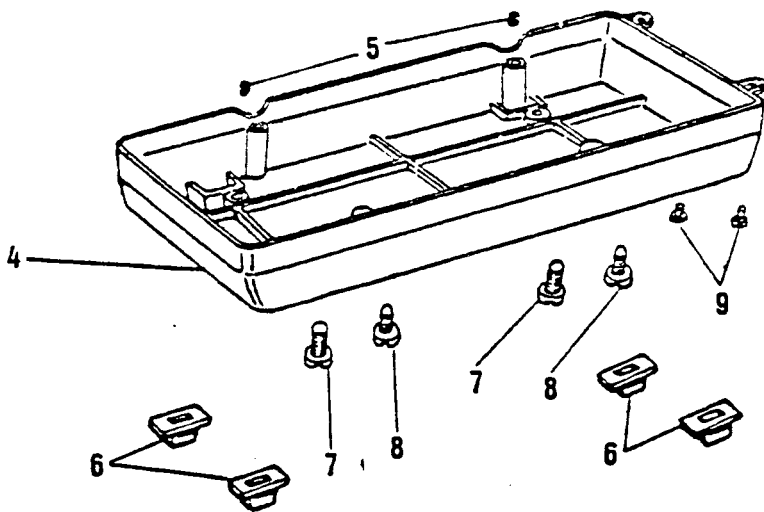
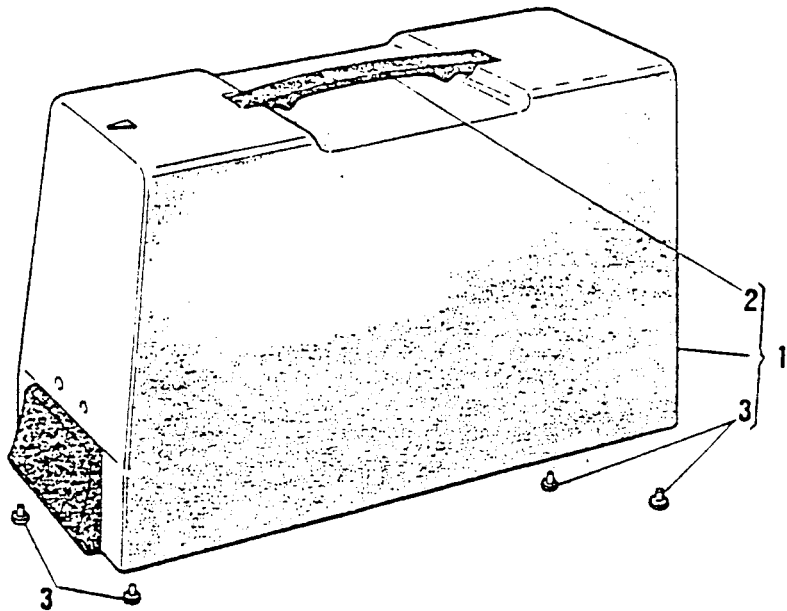
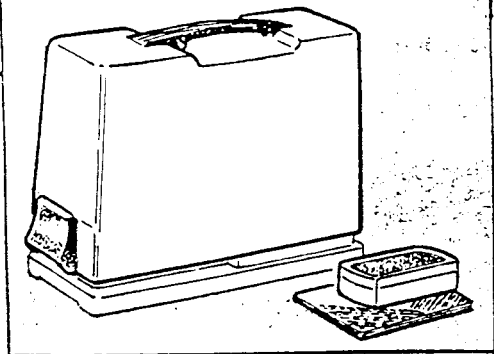
REF. N.	PART. N.	6174	6184	6100	6106	6105	6104	6102	PART DESCRIPTION
1	422026			X	X	X			Attachment set cpl.
2	422027						X		Attachment set cpl.
3	422028							X	Attachment set cpl.
4	422026-451	X							Attachment set cpl.
5	422026-453		X						Attachment set cpl.
6	421743-451	X	X	X	X	X	X	X	Attachment box cover
7	421744-451	X	X	X	X	X	X	X	Attachment box base
8	421742-451	X	X	X	X	X	X	X	Attachment box
9	172336	X	X	X	X	X	X	X	Bobbin Transparent plastic (2)
10	381275			X	X	X			Needle pack (Plastic) Containing : cat. 2020; size 11, 14 and 16 cat. 2045; size 14 cat. 2025; size 14
11	103489	X	X				X	X	Needle pack (Plastic) Containing : cat. 2020; size 11, 14, 16 cat. 2045; size 14 (2)
12	381213	X	X	X	X	X			Blindstich guide
13	311800			X	X	X			Spool pin adaptor (2)
	311800	X	X				X	X	Spool pin adaptor (1)
14	173571			X	X	X			Spool pin (2)
	173571	X	X				X	X	Spool pin (1)
15	8879-454			X	X	X			Spool pin felt (2)
	8879-454	X	X				X	X	Spool pin felt (1)
16	161927	X	X	X	X	X	X	X	Snap-on buttonhole foot
17	171498	X	X	X	X	X	X	X	Snap-on special purpose foot
18	507836	X	X	X	X	X	X	X	Snap-on zipper foot
19	381459		X	X	X	X	X	X	Snap-in feed cover plate
20	161894	X							Needle plate raising plate (Shim)
21	Form n°								See table below

21) INSTRUCTION BOOKS : Languages - Form N:

Model	Italian	English	German	French	Dutch	Danish	Finnish	Swedish	Spanish	English U. S.
6102	920	921	922	923	924	925	926	927		928
6104	940	941	942	943	944	945	946	947		948
6105	950	951	952	953	954	955	956			958
6106	960	961	962	963	964	965	966	967		968
6100	744	751	752	753	754	755	747	748		
6136	970	971	972	973	974	975	976	977		978
6110										902
6174/6184	082	082	082	082	084	085	085	085		

6

6100 series



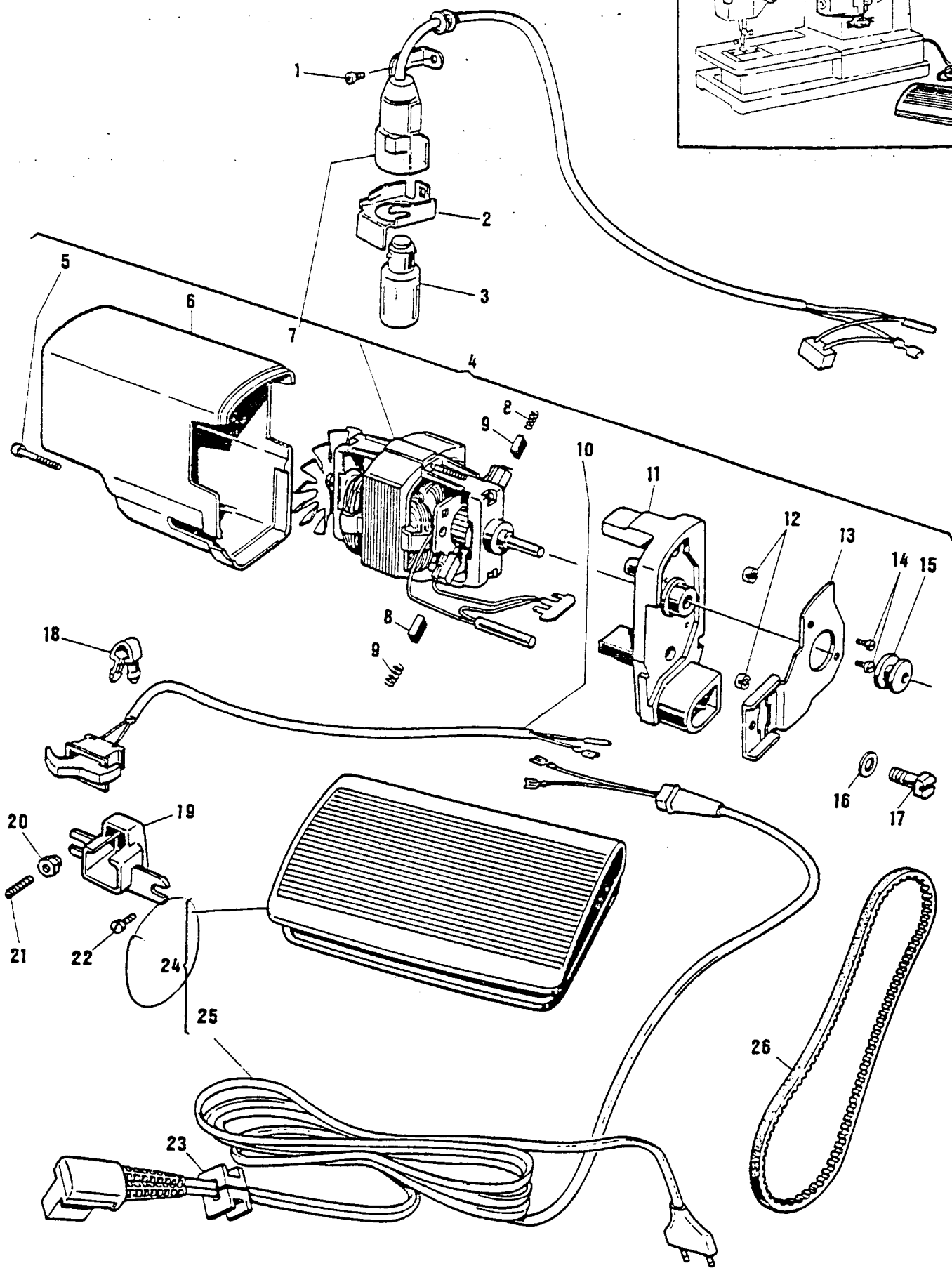
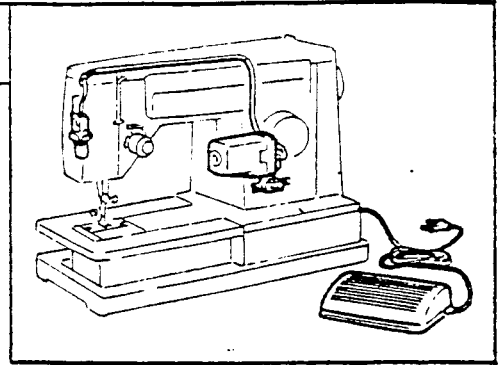
LIST OF PARTS FOR MACHINES 6100 SERIES

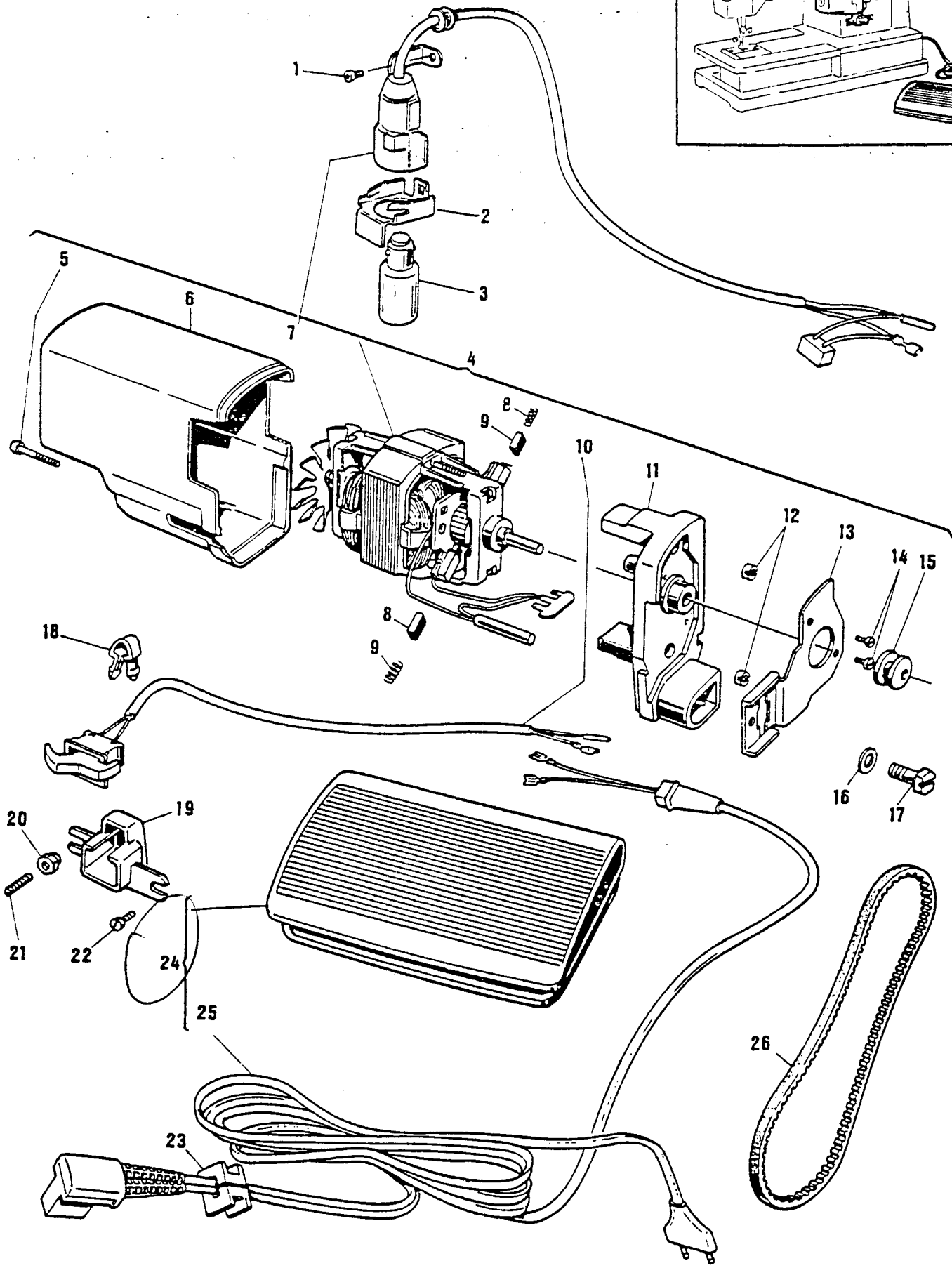
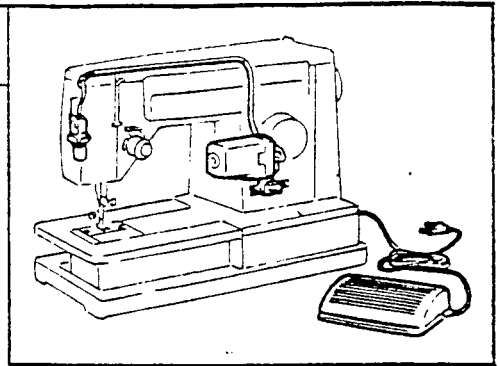
REF. N.	PART. N.	6174	6184	6100	6106	6105	6104	6102	PART DESCRIPTION
1	148817		X	X	X	X	X	X	Carrying case cpl.
2 •	148811-004		X	X	X	X	X	X	Carrying case handle
3 •	148815-451		X	X	X	X	X	X	Carrying case cushion (4)
4	422479-452	X							Bed cover (bottom)
5	141925	X							Machine hinge connection set screw
6	422490	X							Bed leg cushion
7	354675	X							Screw (2)
8	422483	X							Screw (2)
9	139986	X							Screw (2)

• Parts to be ordered directly from Bonnières

7

6100 series





LIST OF PARTS FOR MACHINES 6100 SERIES

REF. N.	PART. N.	6174	6184	6100	6106	6105	6104	6102	PART DESCRIPTION
1	421712-451	X	X	X	X	X	X	X	Light screw
2	421967	X	X	X	X	X	X	X	Heat sink
3	194120-015	X	X	X	X	X	X	X	Bulb 15 W - 220 V
	194120-016	X	X	X	X	X	X	X	Bulb 15 W - 120 V
	194120-017	X	X	X	X	X	X	X	Bulb 15 W - 240 V
4	988138-001	X	X	X	X				Motor cpl. 220 V (for 6136-6146-6156-6120-6130 Models)
	988138-002	X	X	X	X				Motor cpl. 240V (for 6136-6146-6156-6120-6130 Models)
	988138-007	X	X	X	X				Motor cpl. 120 V (for 6136-6146-6156-6120-6130 Models) Canada
	988138-020	X	X	X	X				Motor cpl. 120 V (for 6136-6156-6146-6120-6130 Models) Usa
	605079-027				X	X	X	X	Motor cpl. 220 V
	605079-029				X	X	X	X	Motor cpl. 240 V
	605079-028				X	X	X	X	Motor cpl. 120 V (CANADA)
	605079-051				X	X	X	X	Motor cpl. 120 V (USA)
5	604016-001	X	X	X	X	X	X	X	Screw
6	988136-001	X	X	X	X	X	X	X	Dust cover
7	605209-016	X	X	X	X				Light cpl. 220/240 V (for 6136-6146-6156-6120-6130 Models)
	605209-020	X	X	X	X				Light cpl. (Canada) (for 6136-6146-6156-6120-6130 Models)
	605209-037	X	X	X	X				Light cpl. (Usa) (for 6136-6146-6156-6120-6130 Models)
	605209-012				X	X	X	X	Light cpl. 220/240 V
	605209-011				X	X	X	X	Light cpl. (CANADA)
	605209-036				X	X	X	X	Light cpl. 120 V (USA)
8	619436-001	X	X	X	X	X	X	X	Brush spring (2)
9	619435-004	X	X	X	X	X	X	X	Brush (2)
10	603985-013	X	X	X	X				Switch cpl. (for 6136-6146-6156-6120-6130 Models)
	603985-016	X	X	X	X				Switch cpl. (CANADA) (for 6136-6146-6156-6120-6130 Models)
	603985-031	X	X	X	X				Switch cpl. (USA) (for 6136-6146-6156-6120-6130 Models)
	603985-019				X	X	X	X	Switch cpl. 220/240 V
	603985-018				X	X	X	X	Switch cpl. 120 V (CANADA)
	603985-030				X	X	X	X	Switch cpl. 120 V (USA)
11	988140-001				X	X	X	X	End housing
	988140-002	X	X	X	X				End housing (for 6136-6146-6156-6120-6130 Models)
12	603907-001	X	X	X	X	X	X	X	Nut
13	604233-001	X	X	X	X	X	X	X	Mounting bracket
14	603956-001	X	X	X	X	X	X	X	Tapping screw (2)
15	988176-001	X	X	X	X	X	X	X	Pulley
16	604018-002	X	X	X	X	X	X	X	Washer
17	604020-001	X	X	X	X	X	X	X	Screw
18	352745	X	X	X	X	X	X	X	Clip
19	604102-001	X	X	X	X	X	X	X	Switch enclosure
20	514732-451	X	X	X	X	X	X	X	Nut
21	514731-451	X	X	X	X	X	X	X	Set screw
22	352449		X	X	X	X	X	X	Screw (1)
	352449	X							Screw (2)
23	352584-452	X							Grammet
24	988275-021	X	X	X	X				Foot controller 220 V (for 6136-6146-6156-6120-6130 Models)
	988275-024	X	X	X	X				Foot controller 240 V - GB (for 6136-6146-6156-6120-6130 Models)
	988275-029	X	X	X	X				Foot controller 120 V - CANADA (for 6136-6146-6156-6120-6130 Models)
	988275-026	X	X	X	X				Foot controller 240 - AUSTRALIA (for 6136-6146-6156-6120-6130 Models)
	988275-027	X	X	X	X				Foot controller 120 - USA (for 6136-6146-6156-6120-6130 Models)
	988274-051				X	X	X	X	Foot controller 220 V
	988274-055				X	X	X	X	Foot controller 240 V (GB)
	988274-064				X	X	X	X	Foot controller 120 V (CANADA)
	988274-062				X	X	X	X	Foot controller 120 V (USA)
	988274-057				X	X	X	X	Foot controller 240 V (AUSTRALIA)
25	604654-010	X	X	X	X				Cord cpl. 220 V (for 6136-6146-6156-6120-6130 Models)
	604654-016	X	X	X	X				Cord cpl. 120 V Canada (for 6136-6146-6156-6120-6130 Models)
	604654-011	X	X	X	X				Cord cpl. 240 V - GB (for 6136-6146-6156-6120-6130 Models)
	604654-014	X	X	X	X				Cord cpl. 120 V - USA (for 6136-6146-6156-6120-6130 Models)
	604874-025				X	X	X	X	Cord cpl. 220 V
	604874-023				X	X	X	X	Cord cpl. 120 V - CANADA
	604874-017				X	X	X	X	Cord cpl. 240 V - GB
	604874-021				X	X	X	X	Cord cpl. 120 V - USA
26	604136-009	X	X	X	X	X	X	X	Motor belt

• Parts to be ordered directly from Bonniers

From the library of: Diamond Needle Corp

MARKETING TERRITORIES (Territory Code)

A (105/115V - 220/240V.)

Aden
 Algeria
 Angola
 Bahrain
 Bangladesh
 Benin (Dahomey)
 Burma
 Burundi
 Cambodia
 Cameroons
 Cent. Africa Empire
 Chad
 Congo (Brazzaville)
 Egyptian Arab Republic
 Ethiopia
 Fiji Islands
 Gabon
 Gambia
 Ghana
 Guam
 Guinea
 Guyana
 High Volta
 Hong Kong
 India
 Indonesia
 Iran
 Iraq
 Ivory Coast
 Jordan
 Kenya
 Kuwait
 Laos
 La Reunion
 Lebanon
 Liberia
 Libya
 Malagasy Rep.
 Malawi
 Malaysia
 Mali
 Mauritania
 Mauritius
 Morocco
 Mozambique
 Niger Repub.
 Nigeria
 North Yemen
 Pakistan
 Rhodesia
 Saudi Arabia
 Senegal
 Sierra Leone
 Singapore
 South Korea
 South Yemen
 Sri Lanka
 Sudan
 Syria
 Taiwan
 Tangiers
 Tanzania
 Thailand

Togo
 Tunisia
 Uganda
 Upper Volta
 Vietnam
 Zaire (Kinshasa)
 Zambia

B (220V)

South Africa

C (220 or 240V)

New Zealand

D (240V)

Great Britain
 (England, Scotland,
 Wales).
 Malta

E (220V)

Netherlands

F (220V)

Austria
 Belgium
 Denmark
 Finland
 Greece
 Italy
 Switzerland
 W. Germany

G (120V)

Canada
 United States

H (120V + 220V)

Argentina
 Bahamas
 Barbados
 Bermuda
 Bolivia
 Brazil
 British Honduras
 Canal Zone
 Chile
 Colombia
 Costa Rica
 Ecuador
 El Salvador
 French West Indies
 Guatemala
 Honduras Republic
 Jamaica
 Mexico
 Neth. Antilles

Nicaragua
 Panama
 Paraguay
 Peru
 Philippines
 Puerto Rico
 Surinam
 Trinidad & Tobago
 Venezuela
 Virgin Islands
 West Indies
 (Antigua, Dominica,
 Grenada, Montserrat,
 St. Christopher, Nevis
 Anguilla, St. Lucia,
 St. Vincent, St. Kitts).

J 127/220V)

Belgium Bi-Volt
 W. Germany Bi-Volt

K (240V)

Australia

L (220V)

Norway

M (105V)

Japan

N 127/220V)

France Bi-Volt
 Non mandatory
 countries Bi-Volt.

O Canada (120V)

P (220V)

Albania
 France
 Gibraltar
 Iceland
 Israel
 Jugoslavia
 Luxembourg
 Monaco
 Portugal
 Spain
 Turkey

Q (240V)

Cyprus

R (220V)

Sweden

S (220V)

Eire

From the library of: Diamond Needle Corp